

# Pulp and Paper Screens



# Market – Pulp and Paper Industry

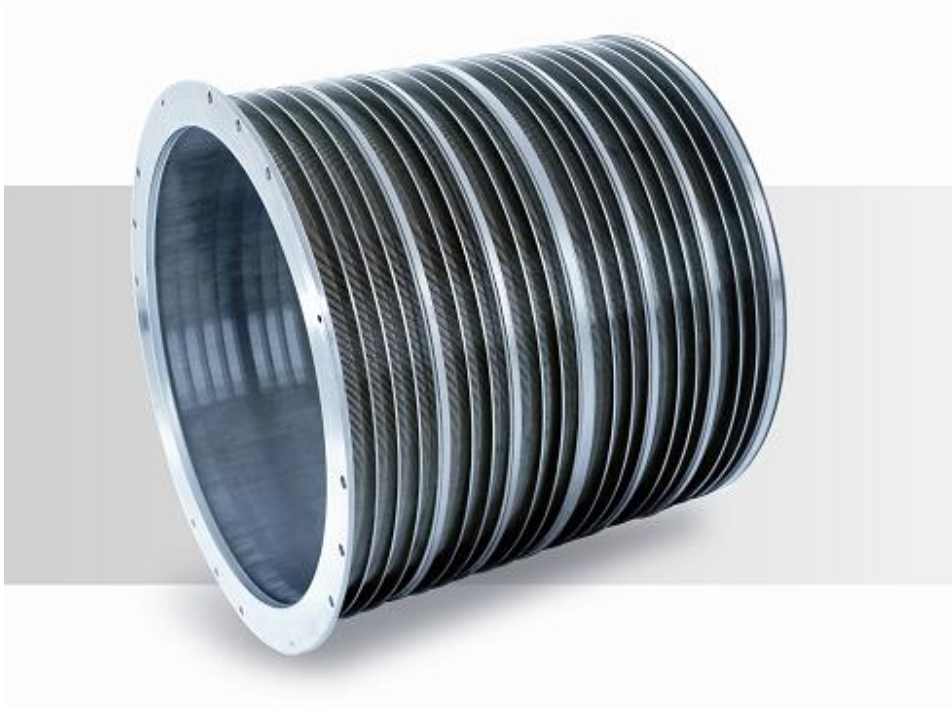


- Pulping Process
- Pulp Drying
- Stock Preparation
- Paper Machine
- Filters
- Wastewater



- Wedged Wire Slotted Cylinders
- Milled Slotted Cylinders
- Drilled Hole Cylinders (smooth or with profile)
- Coater Filters Screen Cylinders
- EB Drilled Hole Cylinders
- Micron Screens
- Drilled Hole Extraction Plates

# Wedge Wire Slotted Cylinders



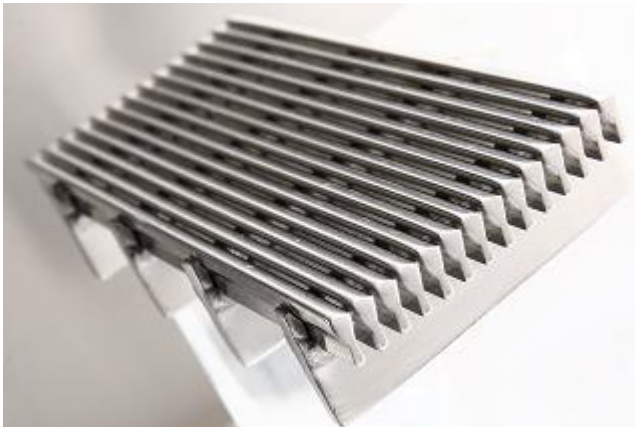
- Custom Designed
- Min. Slot Size: 0.1mm
- High Open Area
- Slot Tolerance:  $\pm 0.02\text{mm}$
- Cylindrical Deviation:  $\pm 0.5\text{mm}$
- Dimensions adaptable to any specific needs
- Chromed in our own workshop:  
Thickness: 150-350um
- 304 ss, 316L ss, 304/316 ss

# Profile Wires



With a wide range of wire shapes, sizes and materials, we will work with you to select the ideal combination for the product you are looking for, creating the optimum screens for your cleaning and filtration application.

- **over 30 types of profile wires**
- **wire width: 2.0 - 4.0 mm**
- **profile depth: 0.5 - 1.5mm**



# Milled Slotted Screen Cylinders

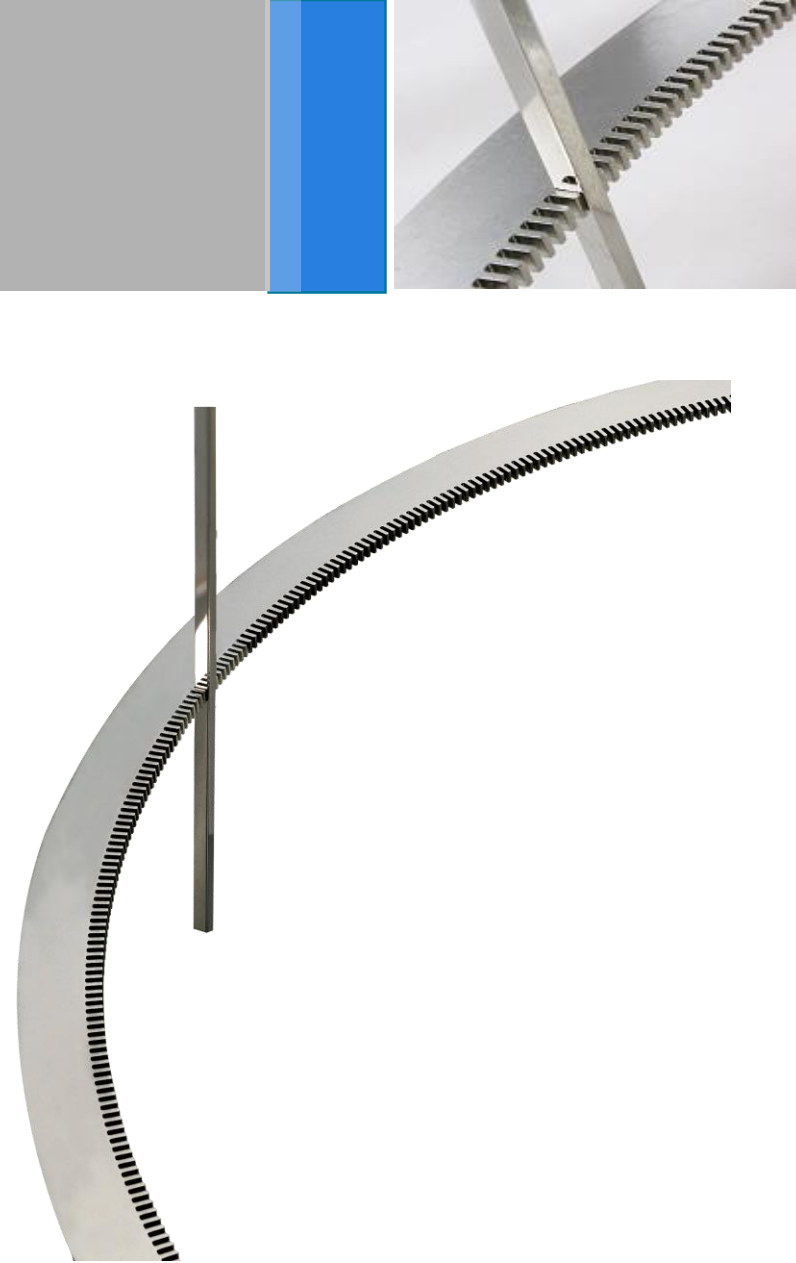
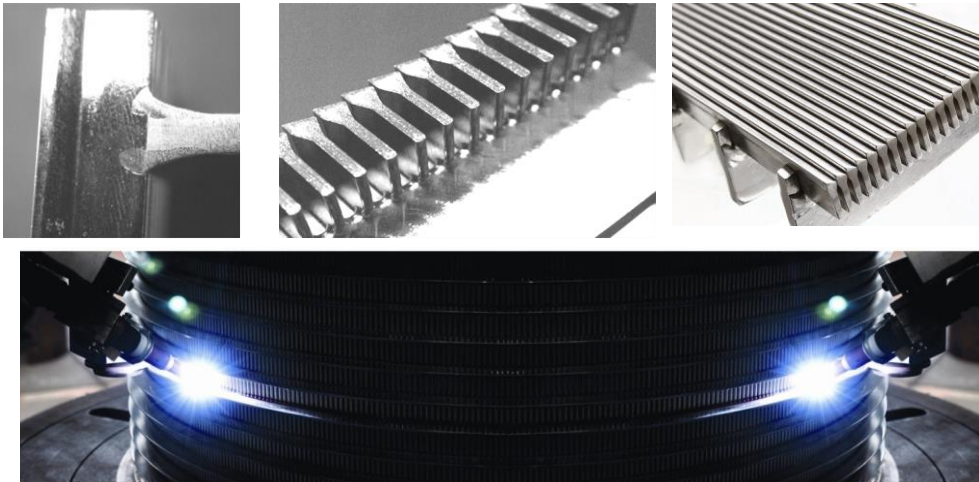


- Typical plate thickness: 6mm, 8mm
- Slot Tolerance:  $\pm 0.02\text{mm}$
- Roundness:  $\pm 0.5\text{ mm}$
- Stronger Construction
- 304 ss, 316L ss, 304/316 ss
- Finished with chrome plating

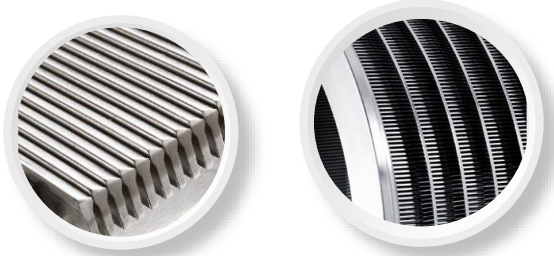
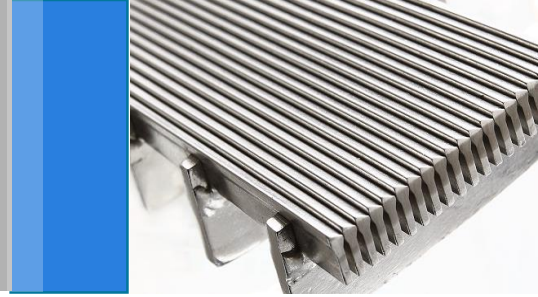


# Precision notches cutting

The notches on the rings are cut by the precision laser cutting machine, and welded by the argon arc welding machine to ensure high strength ,long life time.



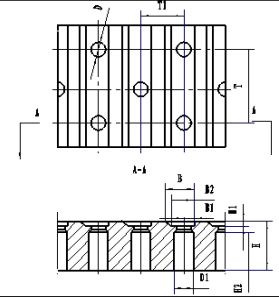
# Cylinder material



- 304sst
- 316Lsst
- 316L bars+304 rings

The material costs between 316sst and 304sst are much higher today and if 304sst is acceptable, you will be able to save on the cost of the cylinders purchased. 316sst has long been the standard material for screen cylinders, but 304sst has higher strength and wear characteristics than 316sst. 316sst has higher chemical resistant properties but in OCC mill application this may not be necessary.

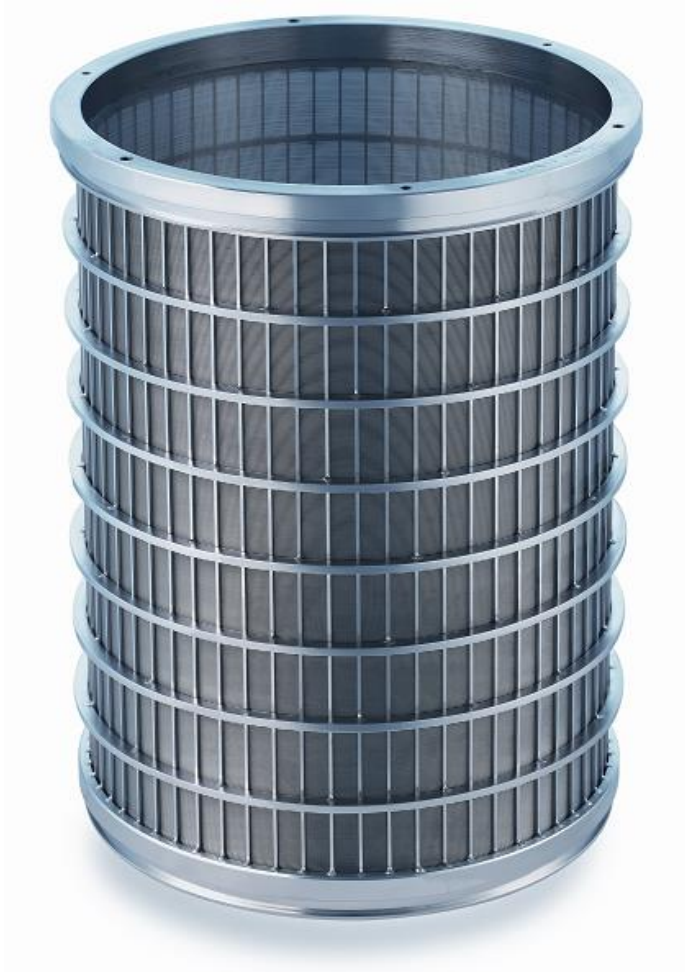
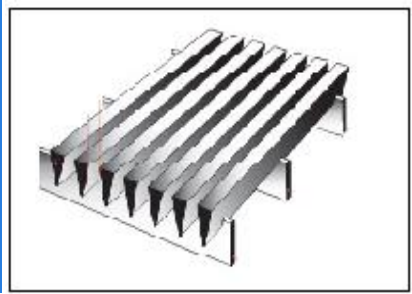
# Drilled Hole Screen Cylinders



- Inflow and outflow filtration
- Wood pulp applications
- Hole diameter  $\geq \Phi 1.0\text{mm}$
- Plate thickness: 5mm、6mm、8mm
- Max. size flat: 1500mm x 6000mm
- With smooth surface or profiles



# Coater Filter Screen Cylinders



- Typically used in chemical treatments added to paper machines
- Types (in common use):
  - Internal: Inside --> Outside Filtration (re-rolled)
  - External: Outside --> Inside Filtration
- Wide range of V-wires and support rods to suit customers needs
- Slot sizes from 0.038 mm
- Precision openings with tolerance:  $\pm 0.03$  mm ( $\leq \Phi 300$  mm)
- Roundness:  $\pm 1.0$  mm
- Facilitates cleaning with an scraper
- 304 ss, 316L ss

# EB Drilled Hole Cylinders



## ➤ Applications:

- Shower water of stock preparation
- Fiber recovery or shive removal
- Black liquor filters
- White water filters
- Stickies reduction filters

## ➤ About EB Perforation:

- Maximum holes per plate = 4 millions
- Maximum cylinder length dep. On h.d. and OA%
- Cylinder is drilled with single electron beam
- Holes are conical
- There are some limitations between hole diameter, open area and the basket size

## ➤ Standard Spec:

- Hole diameter:  $\Phi$  0.15mm,  $\Phi$  0.2mm in thick 2mm, 3mm
- Open Area: 8%-12%
- Material: SUS 304, 316L, Duplex ss

## ➤ Features:

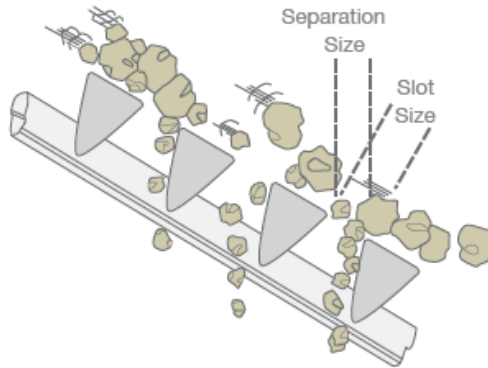
- International sophisticated electron-beam technology
- Accurate perforations
- ADSF can help customers to save  $\geq 20\%$  costs by extending cylinder's service life with a special surface treatment process



# Micron Screens



- Applications: dewatering, fiber removal, liquid/solid separation
- Better flow rate and finer fiber removal
- Low maintenance costs
- Little space needed
- Slot size down to 50um
- Slot Tolerance: 10um
- Average Slot Deviation: 4um
- 304 or 316L sst



# Drilled hole screen plates



## Application

Used in OCC hydra pulper machine

SUS 304, 316, 410 and 420

## Material

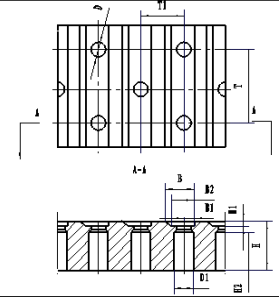
## Finishing

Chrome coating or heat treatment

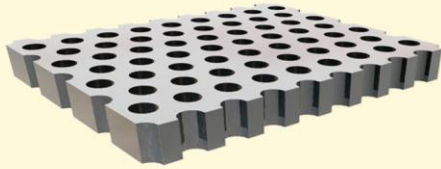
Customized services

## Design

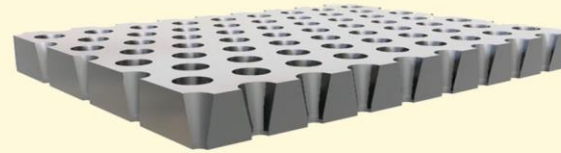
# Hole Pattern



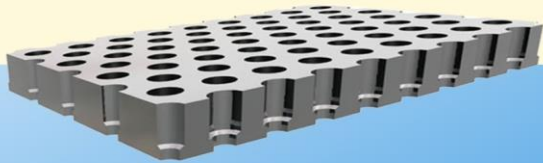
ADSF has many kinds of hole type: straight hole, conical hole, step hole, corrugated hole, we can choose different hole type according to different use conditions.



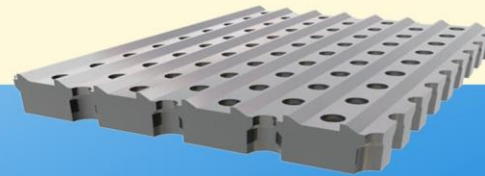
straight hole



conical hole



step hole



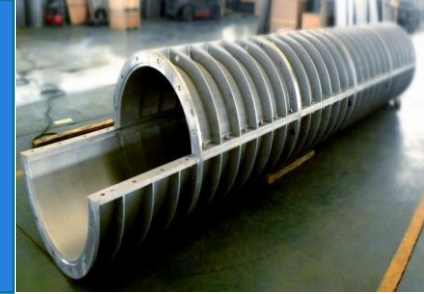
corrugated hole



- ID  $\Phi$  2400 mm x 3200 mm Height →
- Slot opening: 4-8 mm
- Profile wires with extreme hardness and high resistance
- Special designs in toolings to ensure a very small gap between the cylinder and the screw press equipment
- Roundness tolerance  $\leq 0.8$  mm
- Cylindricity deviation  $\leq 1.5$  mm
- Self-cleaning and Anti-clogging



# Screw Press Screen Baskets



**Screw-type:**

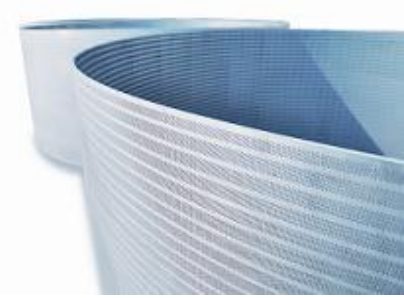
**Extrusion Dewatering Screen Basket**

**Heat Disperser Screen Basket**

**$\Phi 500\text{mm}$ ,  $\Phi 630\text{mm}$ ,  $\Phi 750\text{mm}$ ,  $\Phi 850\text{mm}$   
SCP750/SCP1000/SCP1400**



# Twin Roll Washer Hole Screen Plate



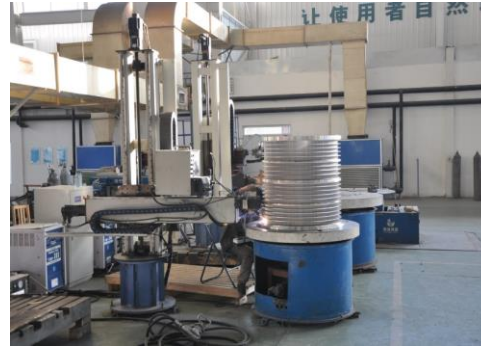
- Featured with patented Electric Sparking Technology
- Best solutions to the filtration of screw press and pulp washer equipments
- Unique technics for small holes in thick plates
- Typical hole Dia.:  $\Phi 0.8 - \Phi 1.6$  mm
- Open area:  $\leq 25\%$
- Plate thickness varying from 2 to 12 mm
- Conical holes with a natural developed degree –  $3-5^\circ$
- Uniform distribution, Accurate Perforation
- Lower resistance, Higher capacity
- Water-efficient & Cost-efficient
- Electro-polishing, No bur



# Advanced Equipments & Machines



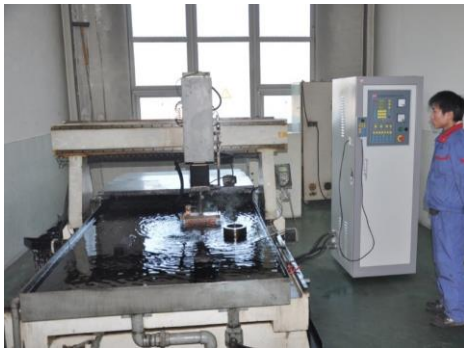
**Laser Cutting**



**Welding Equipment**



**Digital Multiple Axis Drilling**



**Patented Electrical Sparkle Drilling**



**NC Lathe Machine (Max.Dia 3m)**



**Automatic Digital Control Drilling**

# Contact Us



ADSF (Gu'an Anteng Precison Screening Equipment)

CONTACO:

[ventas@gpapermachinery.com](mailto:ventas@gpapermachinery.com)

Telefono movil y WhatsApp: (+52) 272-249-3030

Telefono oficina: (+52) 1 27 2110 7451