

FINBOW | GENUINE BOWHOW

Genuine BowHow



FINBOW SPREADER ROLLS

Designed to Last

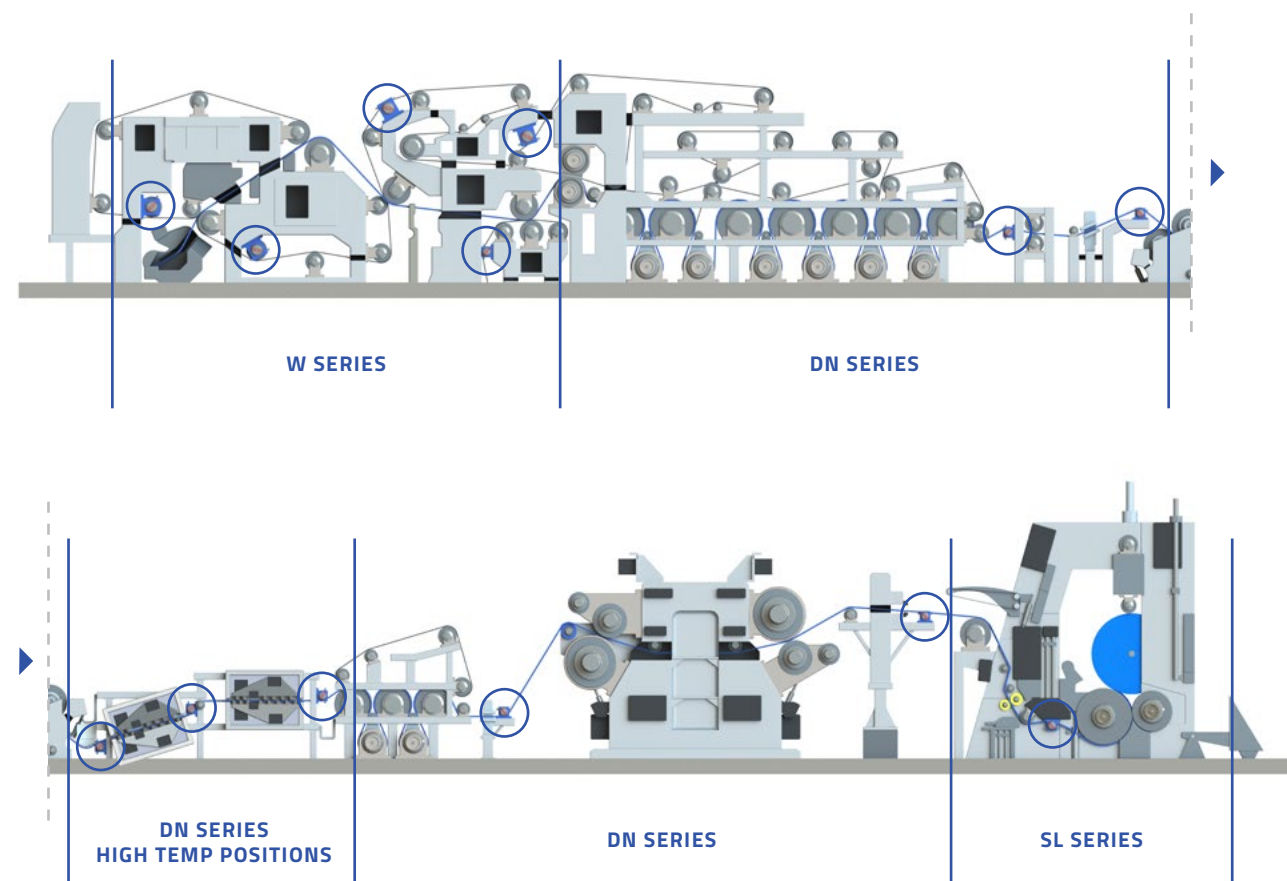
FINBOW

Contents

Genuine BowHow since 1985	3
Wet end – W Series	4
Dry end – DN Series	5
Coatings – NonStick T	5
Pulp drying – PDM Series	6
Supercalender – SC Fly roll / Take-out roll	6
Winder – SL Series	6
Finbow+ Roll Service	7
SmartBow	7

ROLL SUITABILITY

All positions where spreading is needed



FINBOW

Genuine BowHow since 1985

FINBOW HAS BEEN PROVIDING premium spreader rolls and service for the world's largest and fastest pulp and paper machines since 1985. With over 3,200 rolls delivered to 45 countries worldwide, the Finnish company was originally founded to meet the service needs of Nordic pulp and paper mills.

Known for their long lifespan and guaranteed performance, Finbow spreader rolls are always optimized to meet the demands of the actual running environment. Our patented solutions guarantee reliable performance in any environment and are designed to make your pulp and paper production more efficient.

Finbow has been a trademark of Logistic TKT Systems Oy since 2016. Logistic provides custom machine parts and components for the needs of the machine, process and energy industries.

➔ To find out more visit our website at www.finbow.fi

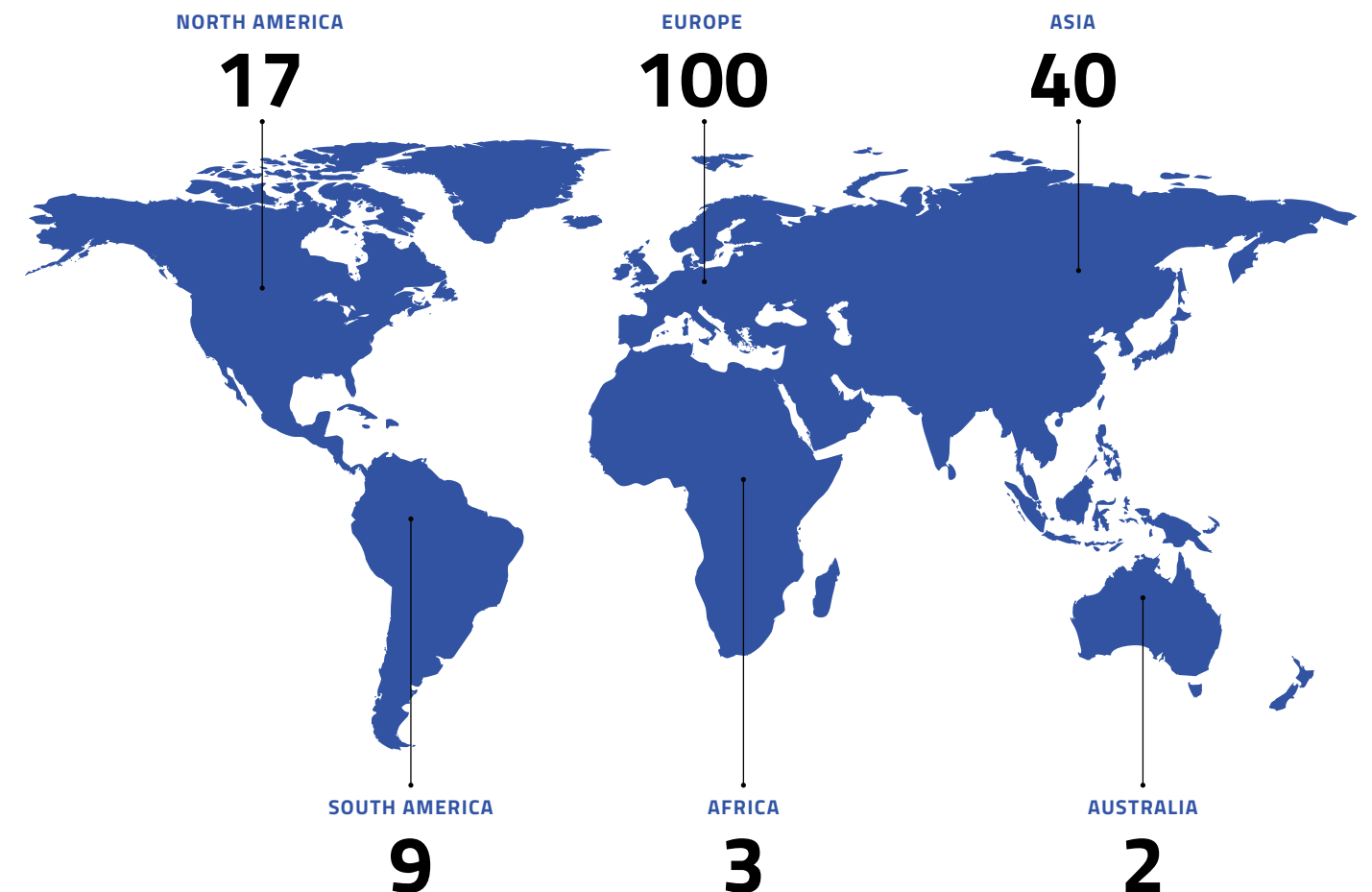
80
EMPLOYEES

35+
YEARS OF SUSTAINABLE GROWTH

FAMILY OWNED BUSINESS
ROOTED IN FINLAND

MILLS IN OPERATION

Finbow around the world





WET END
W Series

The W Series products are designed for felt and wire spreading in the most demanding wet end applications.

TECHNICAL INFORMATION

Target roll types and applications	Felt and wire spreader rolls
Material	AISI
Diameter	up to 450 mm 17.7 in
Max. length	13,000 mm 512 in
Max. speed	2,000 m/min 6500 FPM

Premium water resistance with multiphase sealing system and Finbow couplings. High-precision stainless steel segments together with special hard chrome coating for **superior wear resistance**.



OPTIONAL FEATURES

- Finbow designed moisture removal system
- SmartBow for preventive maintenance
- Stainless steel brackets for extremely harsh conditions
- Ceramic ball bearings
- Automatic lubrication units to ensure end sealing grease application

DRY END
DN Series

The DN Series products are designed for moist or dry applications. In addition, we offer spreader roll solutions that can withstand high temperatures and protect from stickies.

TECHNICAL INFORMATION

Target roll types and applications	For finishing applications: coater, sizer, calender, reel
Material	Carbon steel
Surface	Micro-Venta or spiral groove
Coating	Chrome plated or non-stick coatings
Diameter	150–450 mm 5.9–17.7 in
Max. length	13,000 mm 512 in
Max. speed	2,000 m/min 6500 FPM



OPTIONAL FEATURE: HSD DRIVE

- Energy efficient, maintenance-free
- Easy and reliable
- No need for belt drive
- Permanent magnet electrical motor
- Max. speed 3000 m/min | 9800 FPM
- Precise speed
- Bearingless motor, no lubrication needed

COATINGS
Finbow NonStick T

A combination of Wolfram carbide and Teflon, the Finbow NonStick T coating is specially designed for spreader rolls in abrasive conditions. The double-layer coating provides excellent wear resistance and premium non-stick properties.

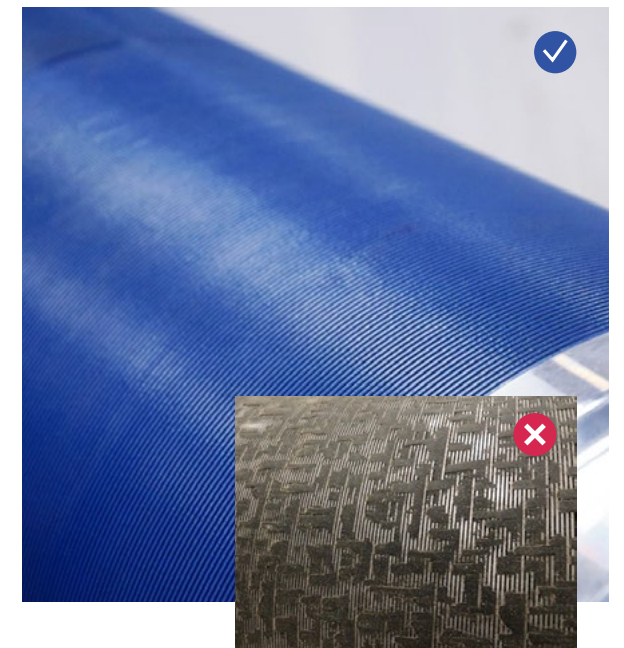
TARGET ROLL TYPES AND APPLICATION

Coater and sizer area spreader rolls

All positions where stickies cause problems

TECHNICAL INFORMATION

Materials	Wolfram carbide and Teflon
Colors	Grey, black, blue, green
Hardness	1200 HV
Coating thickness	100–200 µm
Max. operating temperature	260 °C 500 °F (continuous)
Friction	0,10–0,25



KEY BENEFITS

- Cleaner rolls, less breaks
- Easier cleaning and maintenance
- Longer running life
- Premium resistance for wear

PULP DRYING

PDM Series

The PDM Series products are designed for felt and web spreading applications in pulp drying process where protection against chemicals and water is critical to ensure reliable operation.

TECHNICAL INFORMATION

Material	AISI
Felt spreading	No drive
PDM-DD	Spreader roll with direct drive for web spreading
Diameter	190–450 mm 7.5–17.7 in
Max. length	13,000 mm 512 in

Premium water resistance with multiphase sealing system and Finbow couplings. High-precision stainless steel segments together with special hard chrome coating for **superior wear resistance**.



OPTIONAL FEATURES

- Finbow designed moisture removal system
- SmartBow for preventive maintenance
- Stainless steel brackets for extremely harsh conditions
- Ceramic ball bearings

SUPERCALENDER

SC Fly roll / Take-out roll

For all supercalenders.

TECHNICAL INFORMATION

Material	Steel shell
Surface	Grooved
Coatings	Available
Diameter	240, 314, 360 mm 9.5, 12.4, 14.2 in Other diameters on request



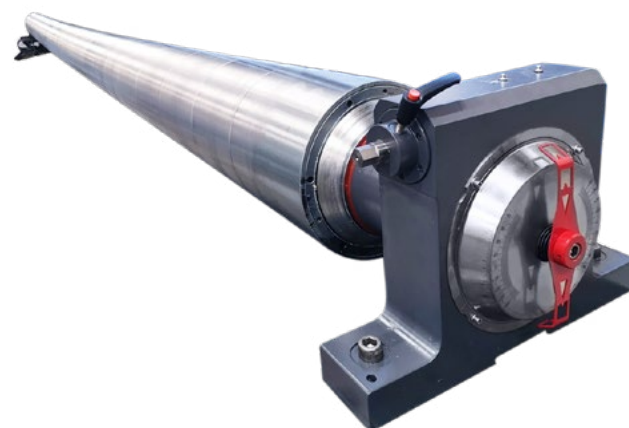
WINDER

SL Series

For slitter winder applications. Finbow spreader rolls reduce winder broke and improve separation of reels after slitting. Wide range of size and speed. Spreader rolls for dual bowed spreading.

TECHNICAL INFORMATION

Material	Carbon steel
Surface	Micro-Venta or spiral groove
Diameter	150–415 mm 5.9–16.3 in
Max. length	13,000 mm 512 in
Coatings	Chrome plated, wolfram carbide
Max. speed	3,000 m/min 9800 FPM



FINBOW+

Spreader Roll Service

Avoiding a single shutdown can save the cost of an entire spreader roll.

Functioning spreader rolls and precise control over the paper web help reduce waste, improve production quality, and prolong felt lifespan. Our spreader roll maintenance and upgrade services can give new life to spreader rolls, whether made by Finbow or other manufacturers. Finbow's patented solutions enable more running meters for the roll and can extend maintenance intervals by several years.

Addressing problems with your spreader rolls before they become actual defects and cause shutdowns can save

valuable time and money. We pay meticulous attention to quality assurance and take special care in considering the operating environments and features of your process when planning and performing maintenance.

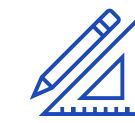
We always test the roll's performance by simulating the actual drive environment as closely as possible. Our experts are always looking to find ways for improving the roll's overall performance. As an assurance of our quality, a **24/36-month warranty** is offered for all serviced rolls.



DISASSEMBLY



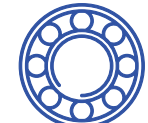
CLEANING



MEASURING



DISASSEMBLY REPORT



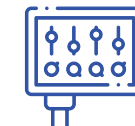
NEW PARTS



BALANCING



ASSEMBLY



TESTING



SERVICE REPORT



SHIPPING



SmartBow
By Finbow

SMARTBOW

Genius at work

For preventative maintenance.

- ✓ Intelligent spreader roll for proactive maintenance
- ✓ Internal roll measurements include humidity and temperature
- ✓ Recognises problematic conditions in advance – inside the roll
- ✓ Gives information about bow angle, running time and roll condition
- ✓ Monitors roll speed which brings major increase to roll's running life



FINBOW | GENUINE
BOWHOW

ventas@gpapermachinery.com

Telefono movil: (+52) 272-249-3030

Telefono fijo: (+52) 1 27 2110 7451