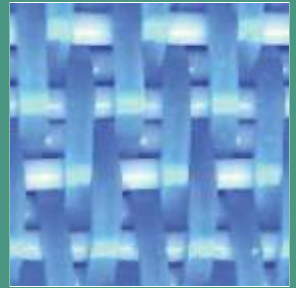


Paper Machine Clothing



Forming Fabrics



Dryer Screens



Pulp & Filter Fabrics

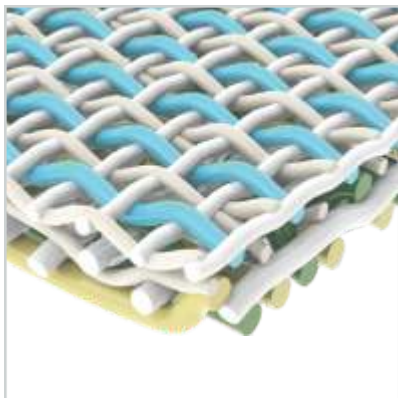


Stainless Steel Covers

... we bring life to paper

Forming Fabrics

SINGLE, MULTI, TRIPLE LAYER & SSB



SHUTE-SUPPORT TRIPLE LAYER SSB RANGE OF FABRICS

Weave 20 shed designs
Seam Type Woven
Width 10 M



ENERGY :
Lower power consumption



CLEAN RUNNING :
Reduced fibre carrying



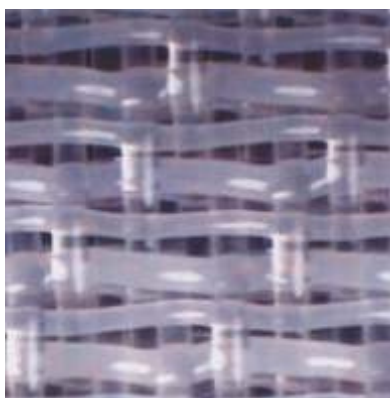
RETENTION :
Increased fibre and fines retention



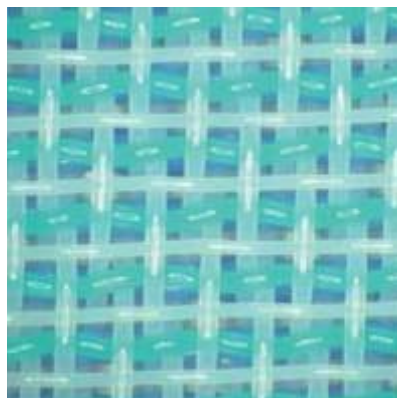
ECONOMIC LIFE :
Greater wear potential



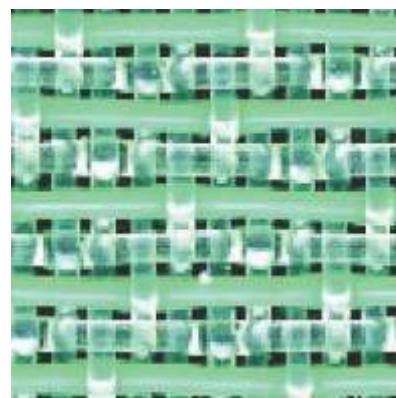
FORMATION :
Uniform distribution of fines and fibre



3.5 layer—Top view



2.5 layer—Top view



5 shaft—Bottom view

TRIPLE WEFT Triflex

Weave 7 to 24 shed in
3 & 3.5 layer designs

Seam Type Woven

Width 10 M

MULTI LAYER Hyflex, Twinflex, Multiflex X

Weave 7 to 16 shed
in 1.5, 2 & 2.5
layer designs

Seam Type Woven

Width 10 M

SINGLE LAYER Spinflex

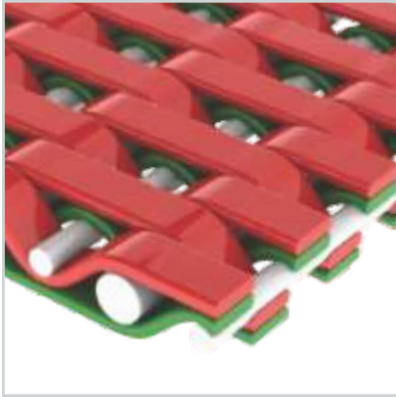
Weave 2, 3, 4, 5 & 6 Shaft

Seam Type Woven, Loop, Custom

Width 10 M

Dryer Screens

WOVEN & SPIRAL LINK



◀ UNO-TIER®

DRYER SCREEN FOR
UNIRUN POSITION WITH
INVISIBLE SEAM

Seam Type	Loop, Pin, Spiral, Zipper, Woven, Custom
Width	9 M
GSM	900-1600
CFM	100-800



Saves Energy Cost



Increases Life Potential



Increases Machine Speed



Improves Sheet Quality

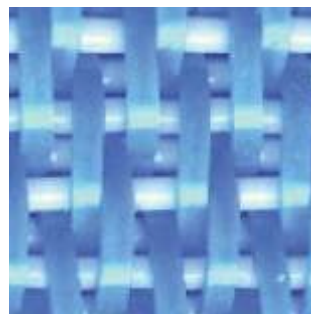
WOVEN

DRYER SCREEN ▶

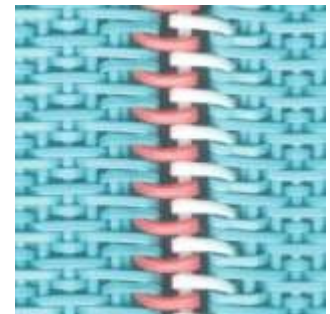
Dryflex
Dryflex HS
Dryflex HH

In round and flat
monofilament yarn

Seam Type	Loop, Pin, Spiral, Zipper, Woven, Custom
Width	9 M
GSM	900-1600
CFM	200-800



Flat Monofilament—Warp

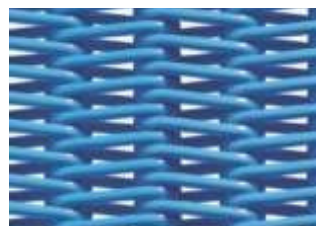


Fabric Seam (Easy-flex seam)
Other fine seams are also provided

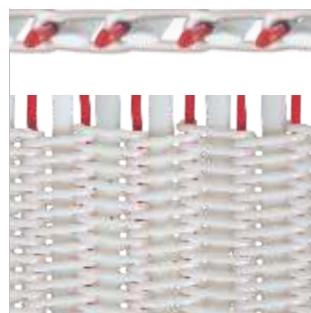
SPIRAL LINK



For Brown Paper



For White Paper



Spiral Mesh Belt with Filler Yarn
(Low Air Permiability)

◀ FILSCREEN

- In round and flat monofilament yarn
- With or without filler yarns

Width	6 M
GSM	1300-1800
CFM	150-1000

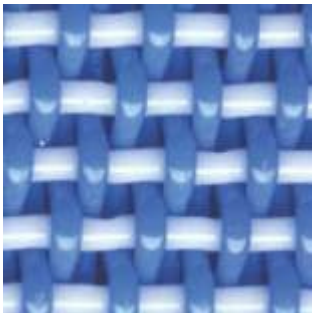
Pulp Fabrics & Others



Kynar

Weave Single layer 2 to 8 shed
Double layer 4 to 8 shed
Mesh 15 to 40/cm
Seam Type Pin, Spiral, Clipper, Custom
Width 9 M
Application Brown Stock/Bleach Washers

◀ **SHRINK FABRICS**
Shrinkflex - Polyester
Cleantex - Polyamide/Polyester
Kflex - Kynar



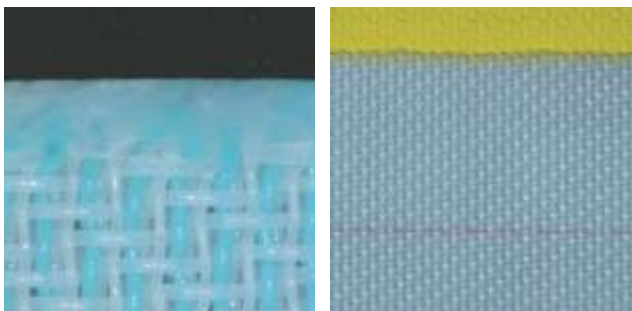
Polyester/Polyamide

Weave Single layer 2 to 6 shed
Double layer 4 to 8 shed
Mesh 2 to 40/cm
Seam Type Pin, Spiral, Clipper, Custom
Width 6 M
Application Sludge press, DNT press, Chemi washer, Andritz press etc.

◀ **FILTER BELTS**
Beltex

Special Treatments

EDGE SEALING



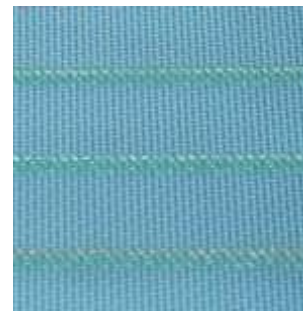
To prevent fraying edges and perfect guiding

Resin based - A soft resin is impregnated into the edge of the fabric.

PU coating - A special hot melt PU is impregnated into the edge of the fabric.

Ultra sonic - An automatic apparatus is used to heat and cut the edges of the fabric for a perfect edge line.

LIFELINE



To increase fabric life

Polymer based - Many fabrics wear faster at the edges. To increase fabric life, a special polymer is applied on the fabric edges for enhancing the fabric edge life.

Metallic Wire Cloth

STAINLESS STEEL ▼

Cromex

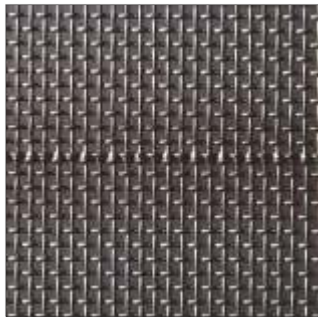
Weave	Plain & Custom
Mesh	2 to 32/cm
Form	Open ended, Diagonally seamed
Material	316, 316L, 317L, Custom
Width	6.3M
Applications	Pulp washers, Cylinder moulds, Dandy covers
Seam	Platinum, Plasma, Gold

PHOSPHOR BRONZE ►

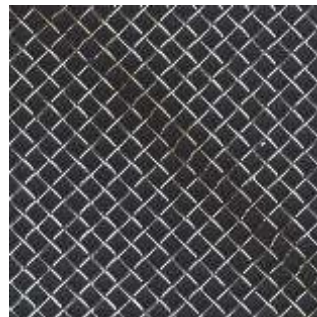
Bronzex



Phosphor Bronze (PB)



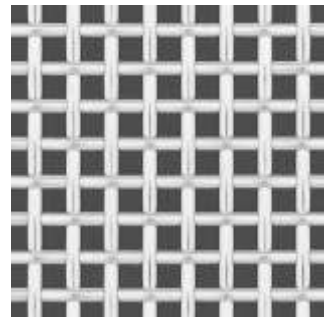
Platinum seam



GMIG seam



Gold Seam—16/cm



2/cm half round mesh

R+D & Technical Services

Research & Development

Development of appropriate technology is the essence of our Company's endeavour to maintain Global Standards. The Company's R&D department is recognised by the Government of India's Science and Technology Department. It is comprehensively equipped with advanced testing and analysis equipment for thorough investigation and understanding of customers' problems and demands.

Technical Service

Customer support goes beyond the R&D lab. Ever responsive to changing needs, we continuously interact with our customers to add value to their operations through customised solutions and innovative products, keeping the "end customer" in mind. Our highly experienced and well trained Technical Service Engineers collaborate deeply with customers and happily share their knowledge, resulting in engineered solutions. We are fully aware that, at the end of the day, our customers want **"Results—not just fabrics!"**



Fabric frame-structure analysis



Monofilament Crimp Analysis



Fabric elongation & Hysteresis test



Fabric Continuous Caliper and Air Permeability Measurement

Our Commitment

"TO MEET CUSTOMER NEEDS AND EXCEED THEIR EXPECTATIONS"

An ISO 9001 : 2015 Company



12.6 M wide-fully automated German looms

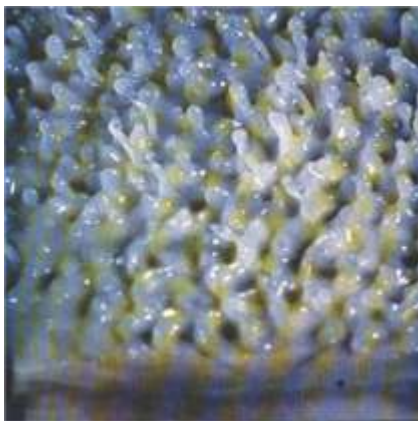


11 M wide-fully PLC controlled, heat setting/finishing table



Fully Automatic Seaming Machine

Stroboscopic Analysis



Stock turbulence study

Drainage Survey



Table drainage behaviour analysis

Foil Angle Measurement



Foil angle measurement on the machine