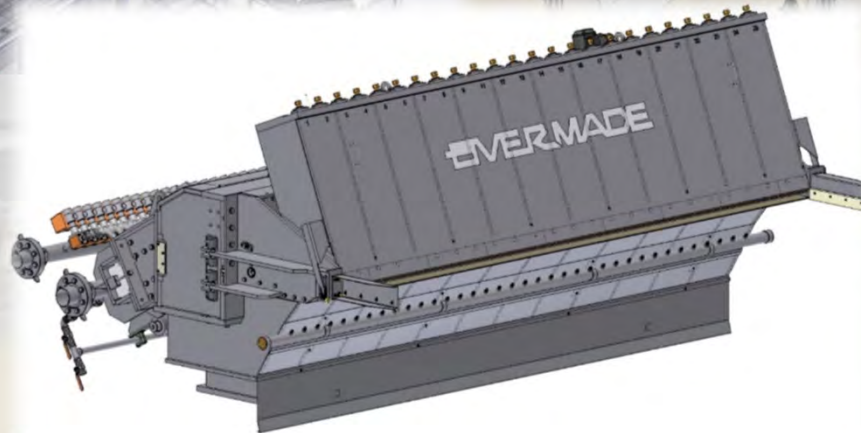
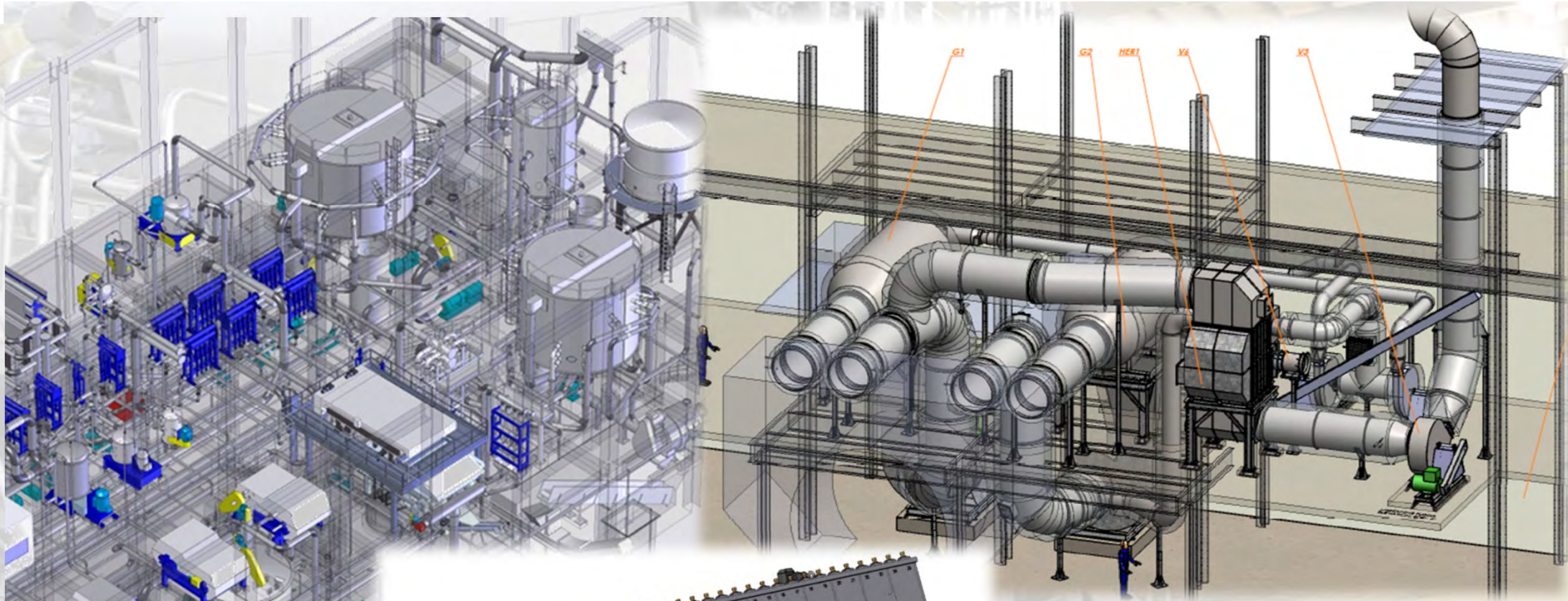


DESIGN & ENGINEERING



3D DETAILED ENGINEERING:

- STOCK PREPARATION
- APPROACH FLOW SYSTEM
- FIBER RECOVERY SYSTEM
- VACUUM
- HOOD & STEAM
- ON MACHINE PIPING & DUCTS

KNOW-HOW AND CAPABILITY

DESIGN, MANUFACTURING & ASSEMBLY

CASTING AND FORGING:

- CAST IRON AND NODULAR CAST IRON
- STEEL AND STAINLESS STEEL

FABBRICATION:

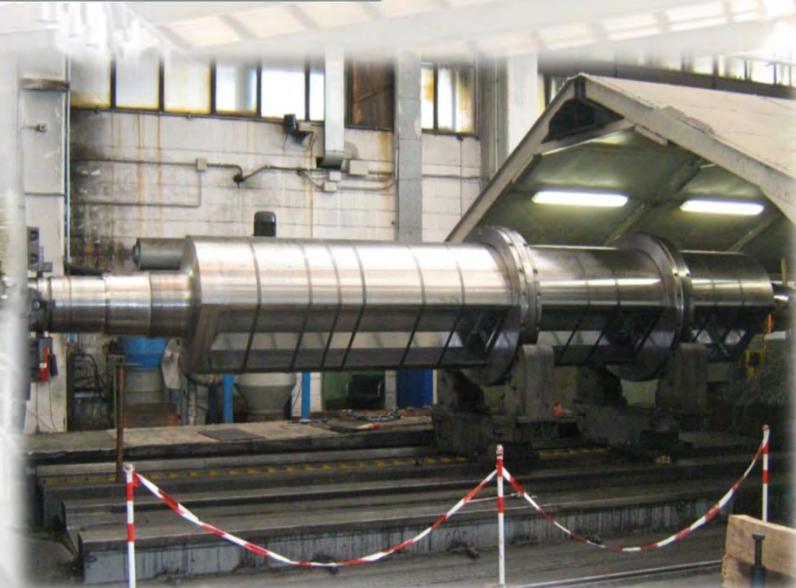
- STEEL AND STAINLESS STEEL WELDING
- CALENDERING

MACHINING:

- TURNING
- MILLING

ASSEMBLY:

- COMPLETE PRE-ERECTION
- PRE-PIPING
- PACKING AND SHIPPING





YANKEE ROLLS AND DRYERS IN STEEL
AND CAST IRON

The image shows a massive industrial steel roll, partially covered in blue plastic, resting on red metal stands in a large factory. In the background, there are white industrial structures and stairs. A large yellow arrow points from the text to the roll.

YANKEE STEEL ROLLS - 15 FEET

HEADBOX DILUTIONS SYSTEM



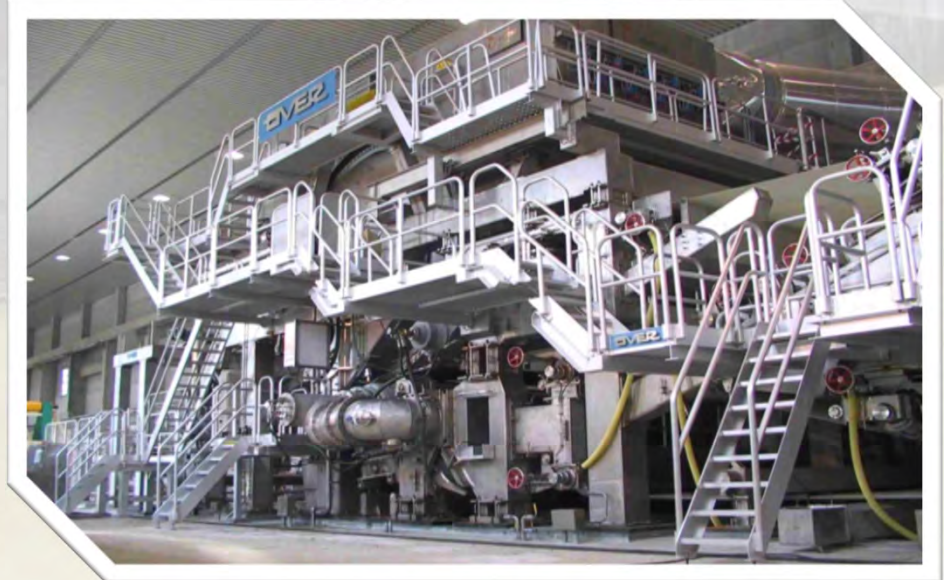
HYDRAULIC HEADBOXES



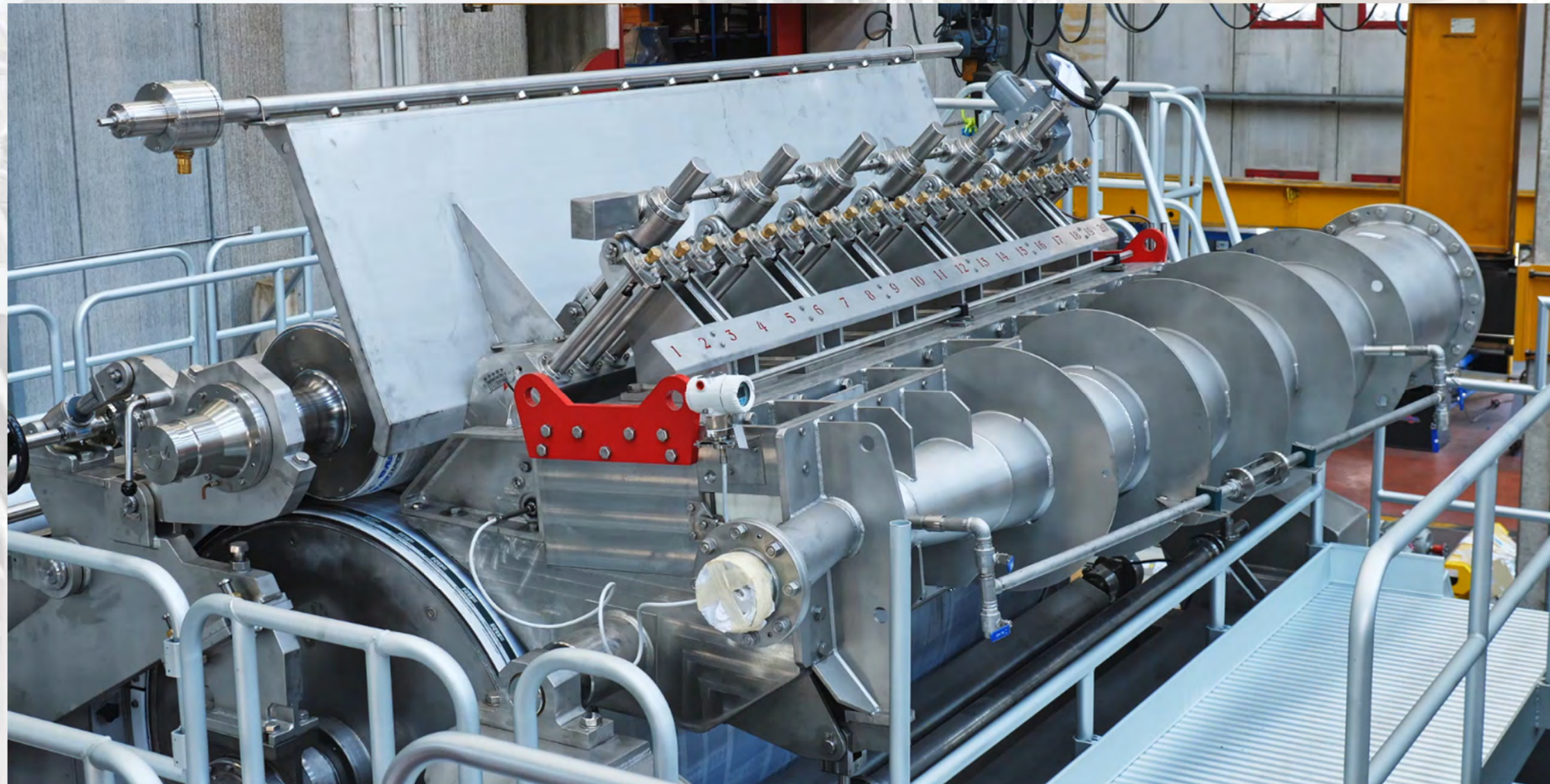
MULTI WIRE MACHINE



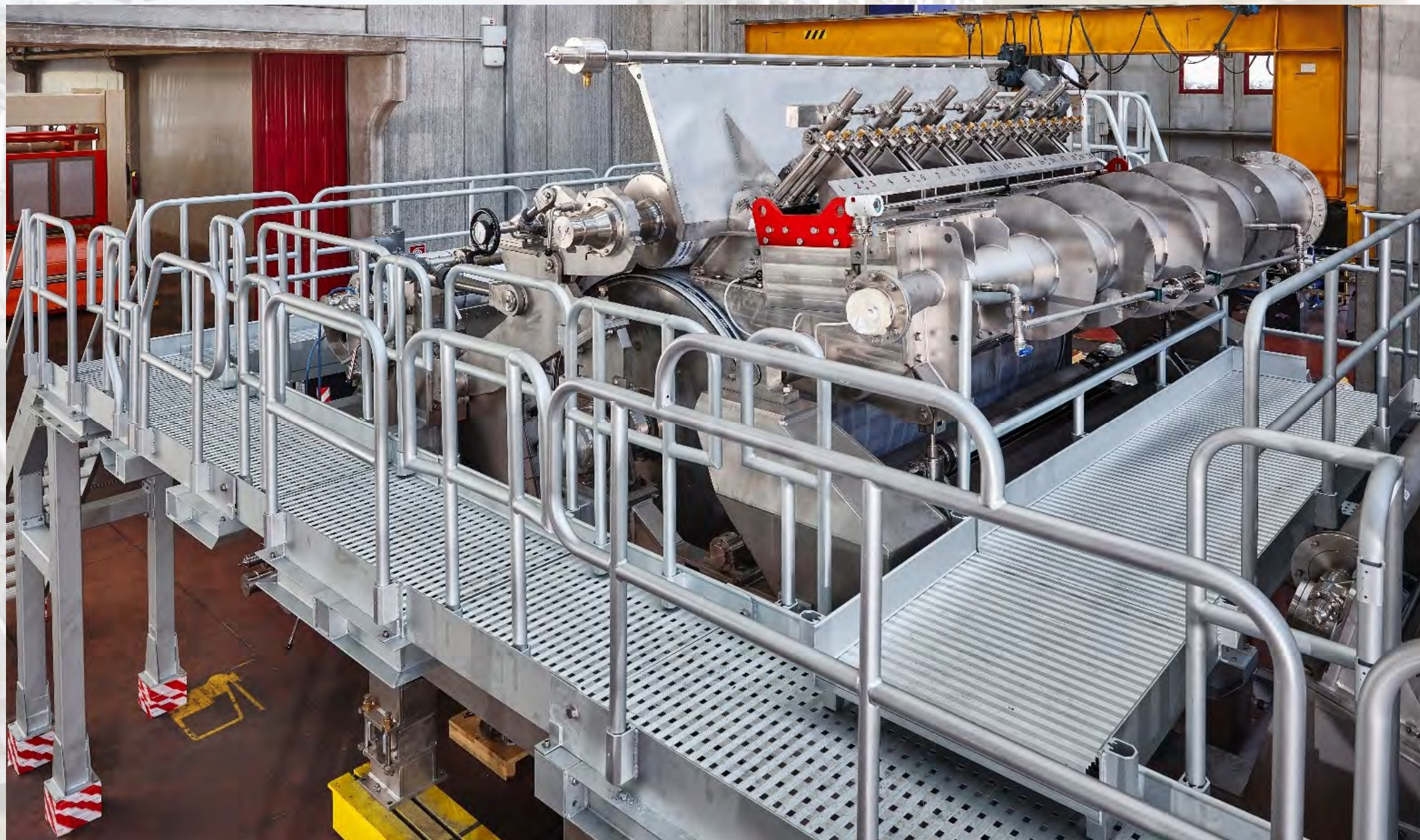
CRESCENT FORMER

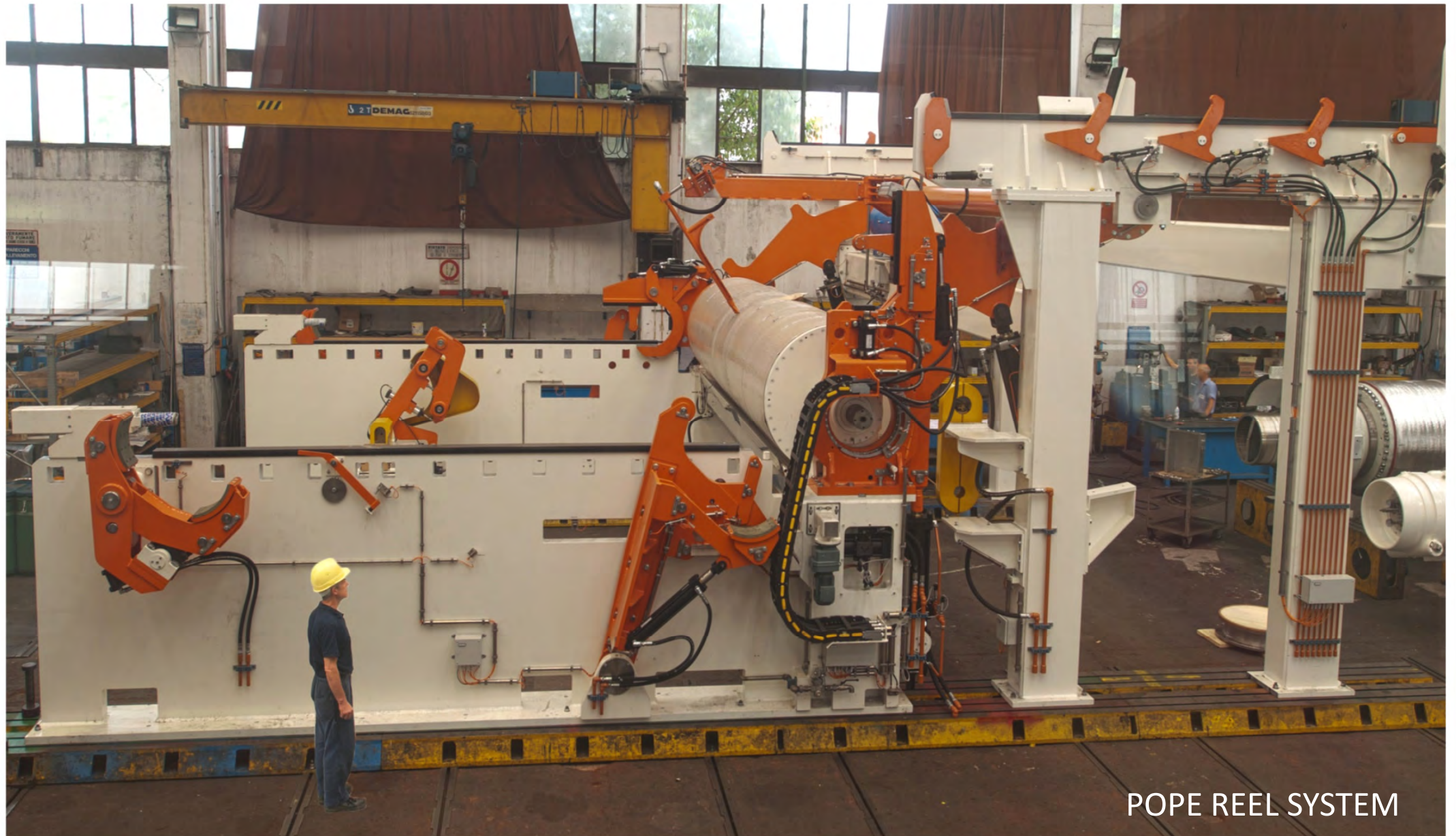


CRESECENT FORMER TISSUE MACHINE HEADBOX



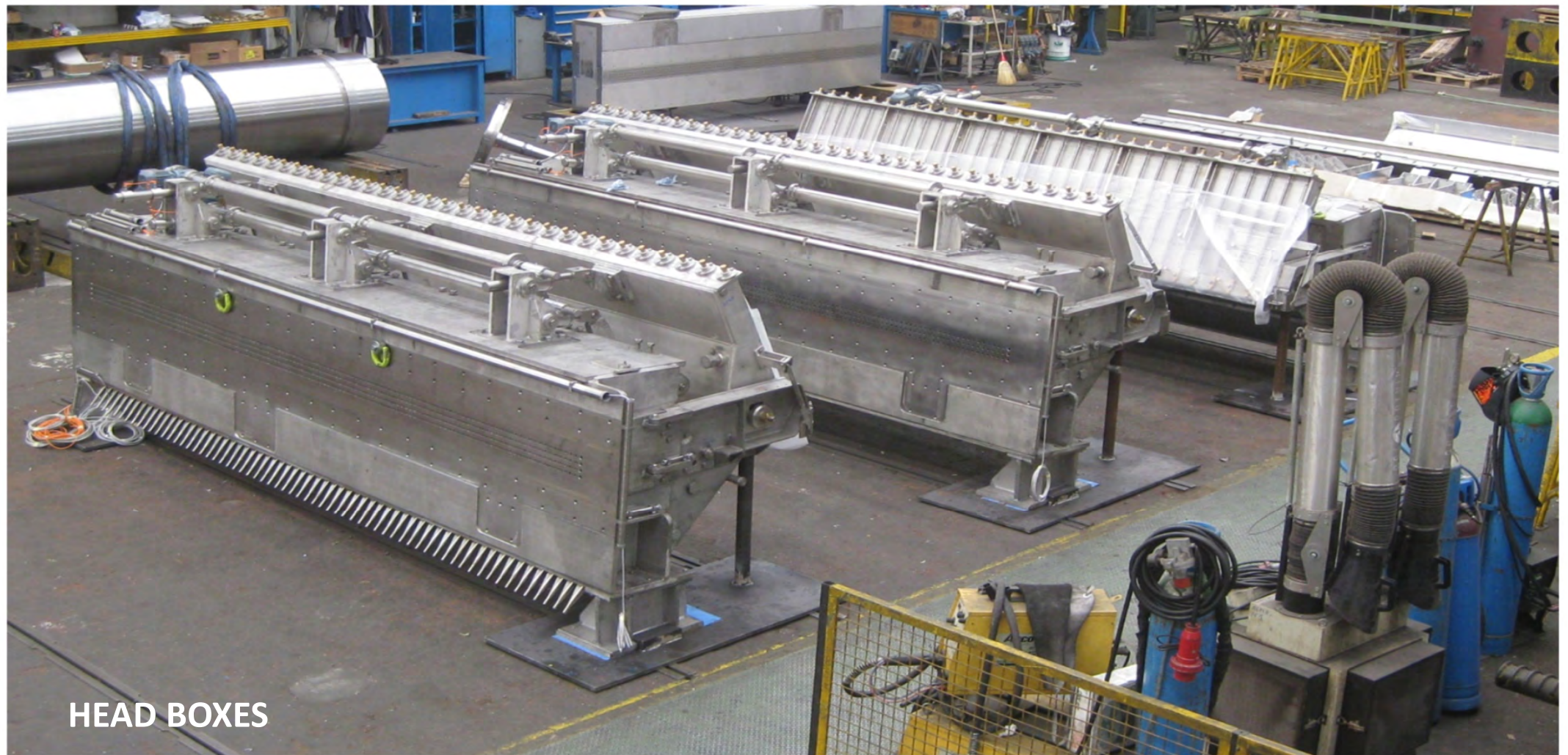
CRESECENT FORMER OVER CR C20 (2.000 m/min. 100TPD, 12-30gsm)



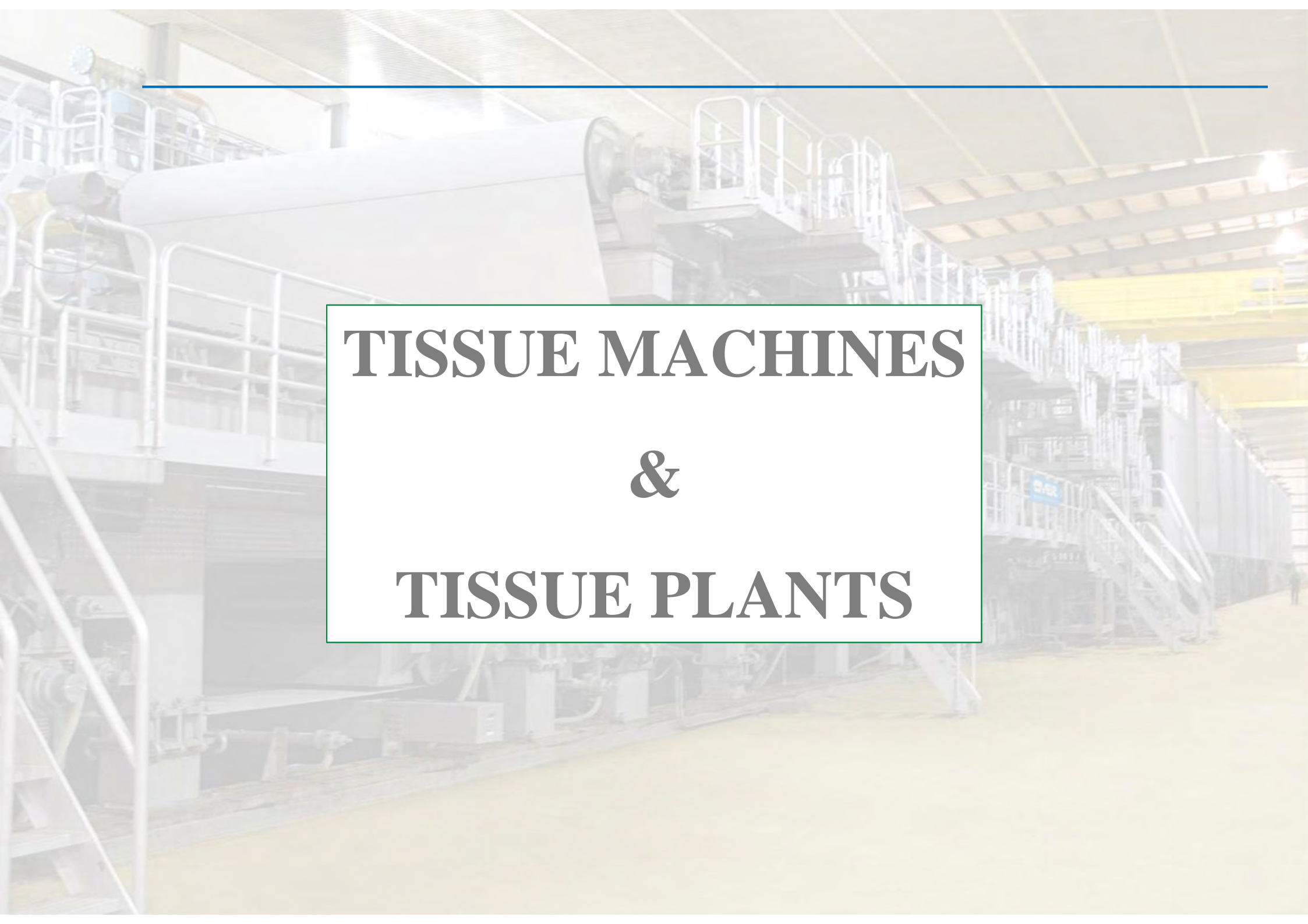


POPE REEL SYSTEM





HEAD BOXES



TISSUE MACHINES & TISSUE PLANTS

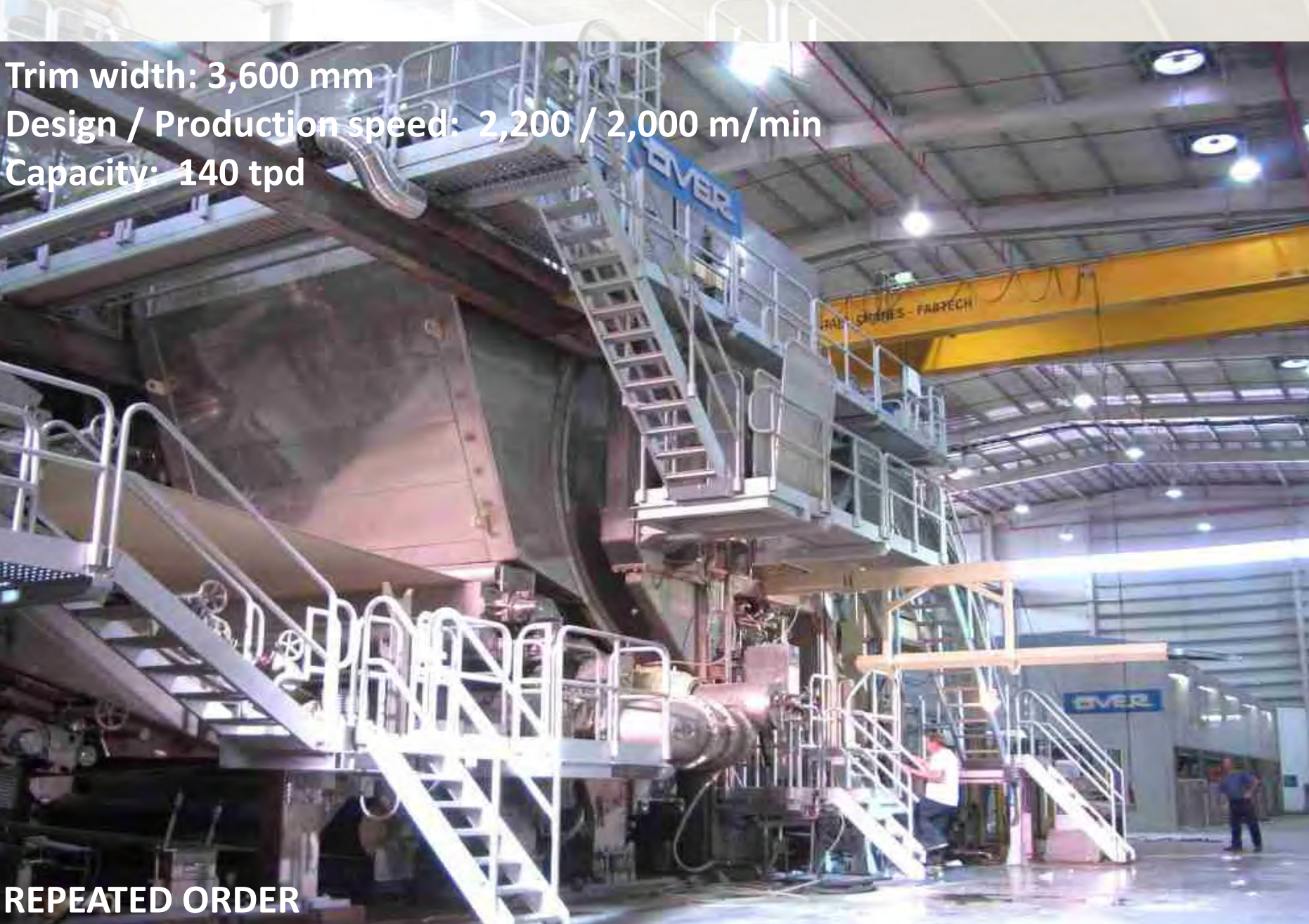



Trim width: 3,600 mm

Design / Production speed: 2,200 / 2,000 m/min

Capacity: 140 tpd

REPEATED ORDER





Trim width: 2,850 mm
Design speed: 1,600 m/min
Capacity: 80 tpd

REPEATED ORDER

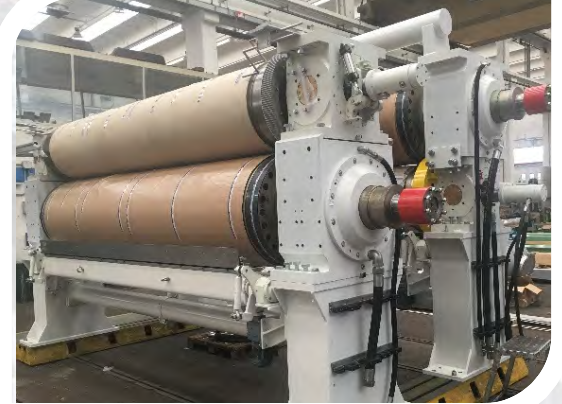
DRYER SECTIONS



SIZE PRESSES



CALENDERS



REELS



ROLLS



WINDERS





A FAMILY OF HEADBOXES

Pressurized Headboxes:

Roll Set-F

Hydraulic Headboxes:

Dynaflo-FL

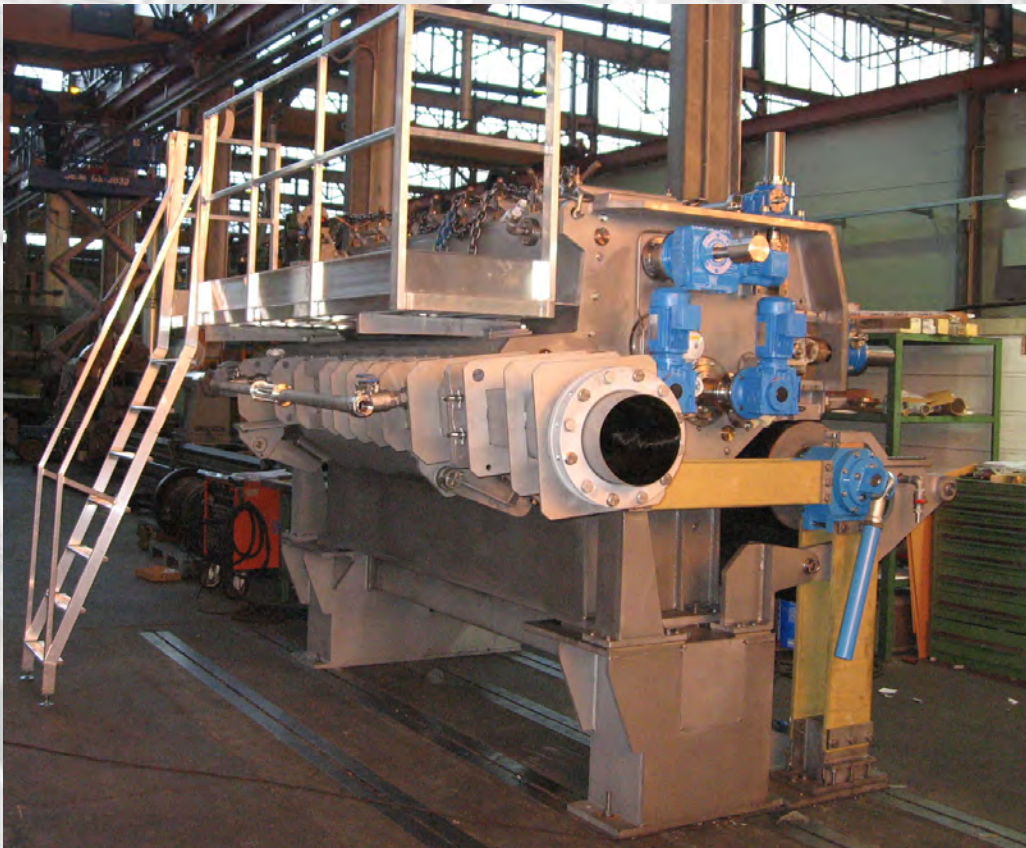
Dynaflo-C

Dynaflo-C2

Dynaflo-TW

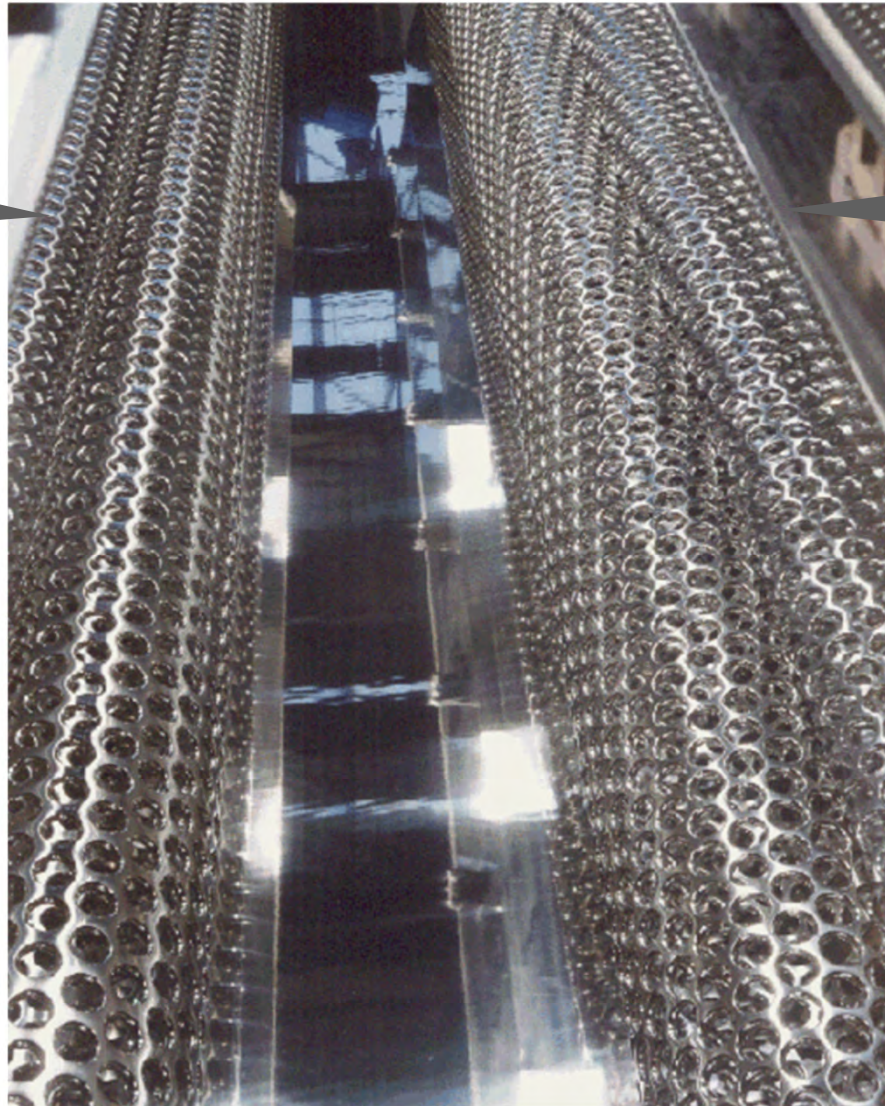
Pressurized Headboxes

ROLLSET F type



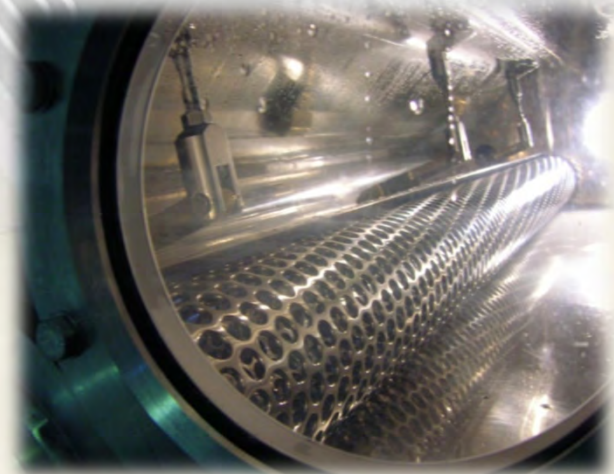
Back roll – OA 40%
Straight Holes pattern

→
Flow stream
(back side)

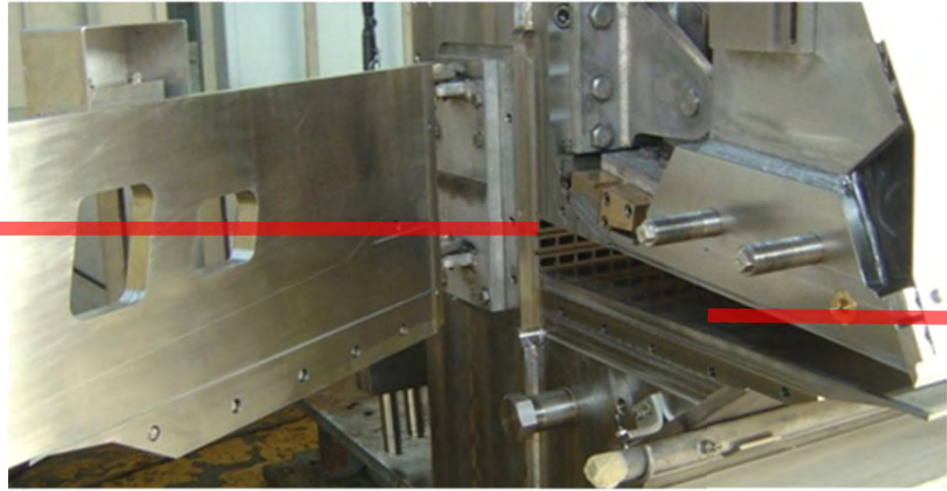


Slice roll – OA 51.4%
Spiral Holes pattern

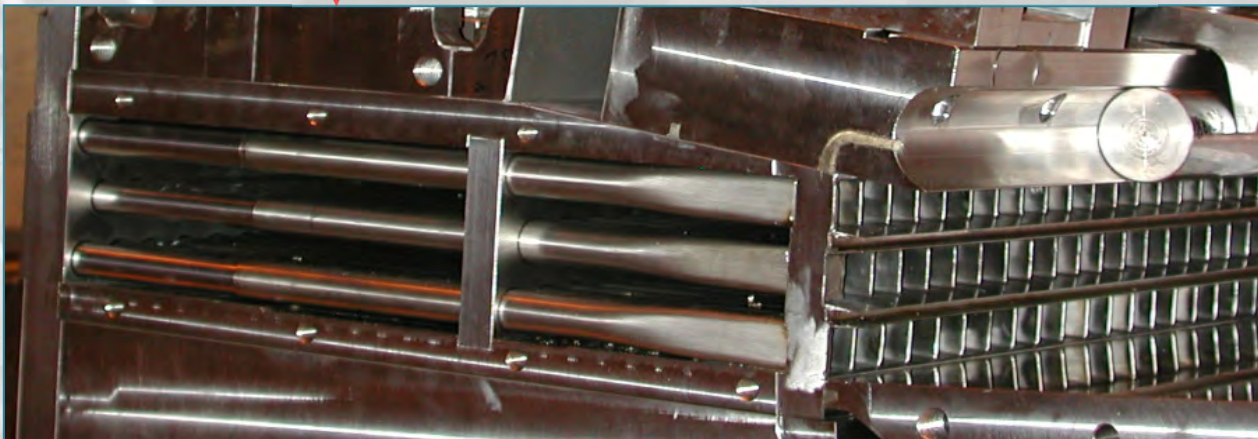
→
Flow stream
(slice side)



Dynaflow details



Tube bank



Nozzle with lamellas



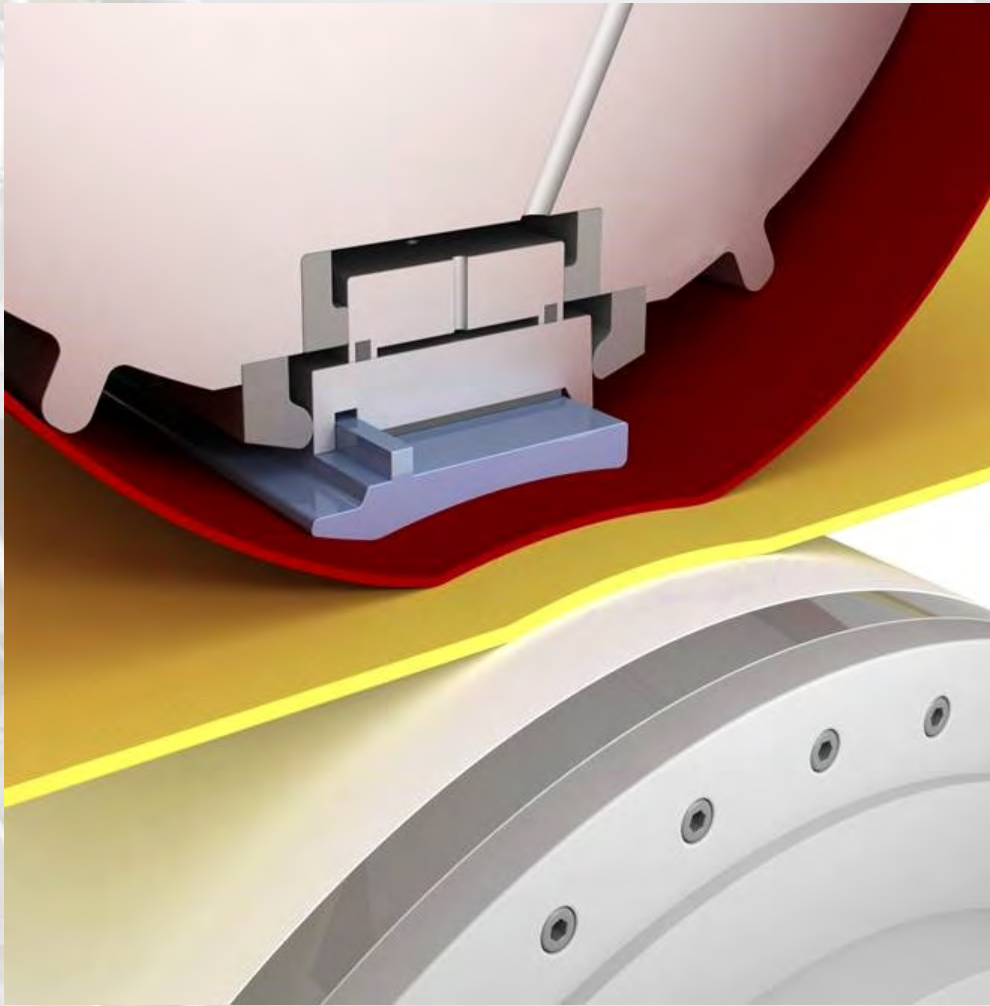
Inlet from mixing
chamber

Outlet

EXAMPLE OF PRESS SECTION: Press-III-XL



SHOE PRESS – FLEXIBLE ROLL



DRYER SECTIONS



SIZE AND FILM PRESSES

Application: Sizing, Pigmenting, Thin Coating



A large industrial facility, likely a steel mill, featuring multiple levels of machinery and walkways. The equipment is complex, with various pipes, valves, and structural supports. The floor is a light-colored, polished surface. The overall scene is industrial and brightly lit.

WINDERS

Tissue Paper SERIES 3500T WINDER



Type: Two-drum shaftless winder
Application: Tissue paper, 2.800 mm and 2.500 mpm

N.3 UN-WINDERS with Slitter section



CALENDER SECTION



SERIES 3500 WINDER



Type: Two-drum shaftless winder
Application: Medium, Liner, to 5.600 mm and 2.500 mpm

SERIES 1500 WINDER





Type: Two-drum shaftless winder
Application: MG Paper, up to 2.600 mm and 1.200 mpm

COMPLETE MACHINES

Name:	Visy Paper VP10
Country:	Australia
Type:	Multi-wire
Grades:	HP Kraftliner
Sheet width:	6.750 mm
Speed:	1.200 mpm
Production capacity:	1.300 TPD
Basis weight:	150 ÷ 440 g/m²



COMPLETE MACHINES

Name:	Pratt. VP15
Country:	USA
Type:	Multi-wire
Grades:	Fluting & Testliner
Sheet width:	5.670 mm
Speed:	1.200 mpm
Production capacity:	1.100 TPD
Basis weight:	80 ÷ 180 g/m²



COMPLETE MACHINES

Name:	SK LINER
Country:	USA
Type:	Multi-wire
Grades:	Kraftliner
Sheet width:	4.750 mm
Speed:	900 mpm
Production capacity:	600 TPD
Basis weight:	95 ÷ 230 g/m²





 **GABRIEL ALVAREZ MARIN**
 **ventas@gpapermachinery.com**
 **Telefono y whatsapp:**
(+52) 272-249-3030

