



COMPANY PROFILE

steam boilers since 1929

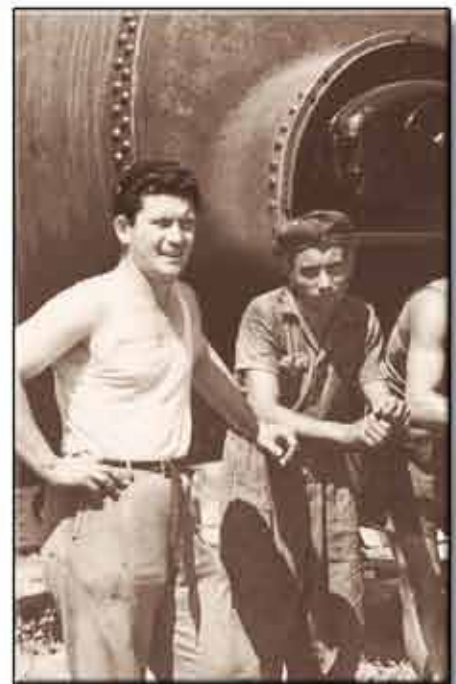
our history



Our long story goes in parallel with the history of steam, the oldest and most natural energy, which has always accompanied the evolution of technology and industry.

MINGAZZINI SRL origins are deeply rooted in the Padan plain, where the first food preserving and dairy industries developed and where consequently the need to introduce steam in the industrial processes rose.

Here, in 1918, VITTORIOSA company of Mingazzini & C. passed from the production of “movable steam engines” to the study and construction of the first steam boilers.

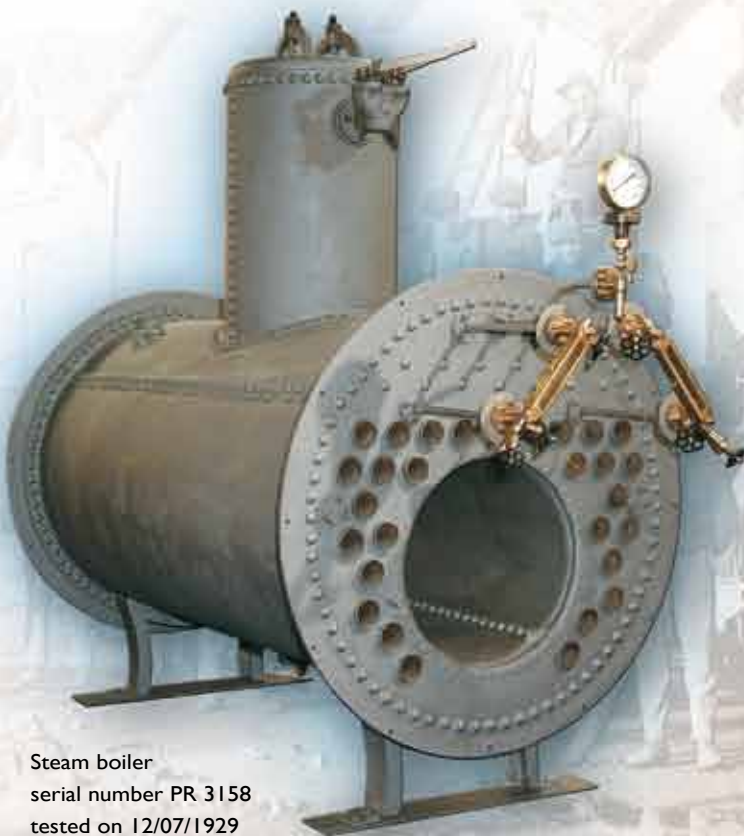




Since 1929, when it became MINGAZZINI, the company has always followed, starting from its origin, the industrial development of Italy, been dedicated to the manufacturing of boilers more and more powerful, up to the creation of modern thermal plants, for the industrial production on a wide scale.

Our markets also, either in technology terms or geographic ones, have constantly been enlarged, so that nowadays our clients show a very variegated configuration.

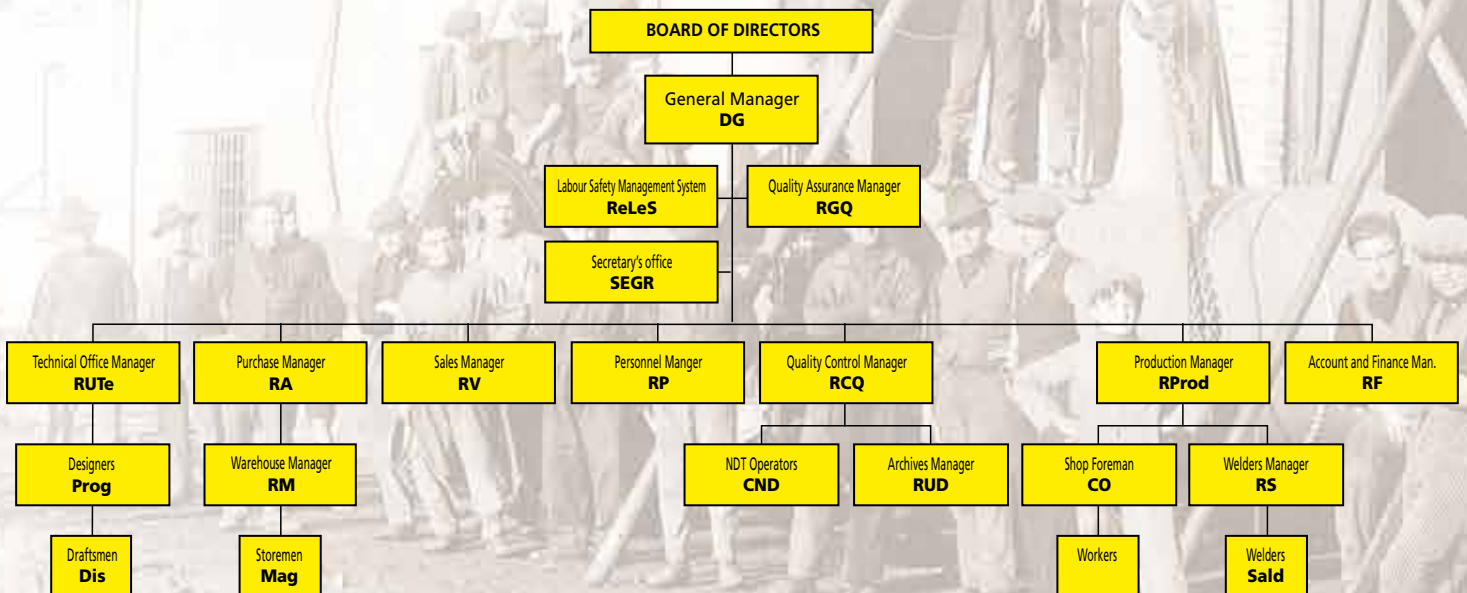
Steam boiler
serial number PR 3158
tested on 12/07/1929



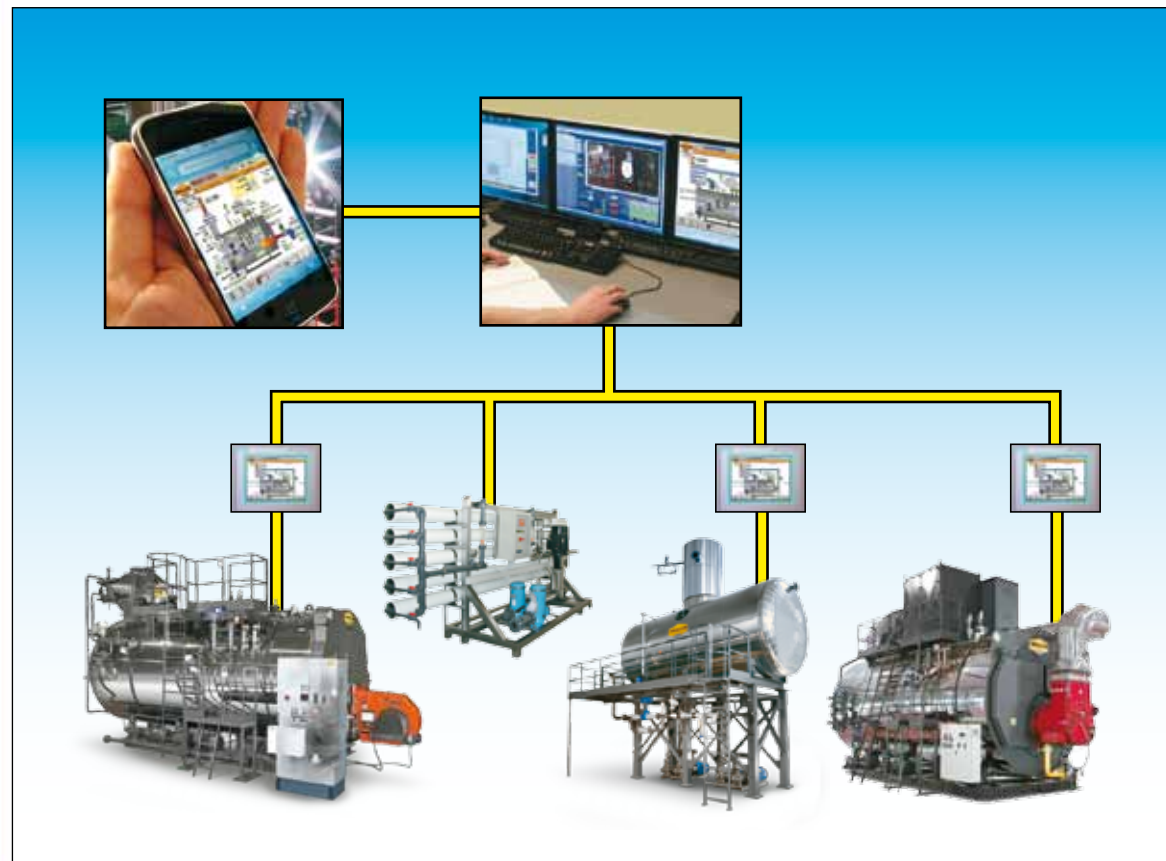
our organization



Our history led us to produce now, in a plant with a total surface of 25,000 sm. of which 10,500 are covered, steam boilers, hot and superheated water boilers, steam accumulator vessels, exchangers and degassing units studied in the minimum details and designed on the measure for the specific needs of industrials.

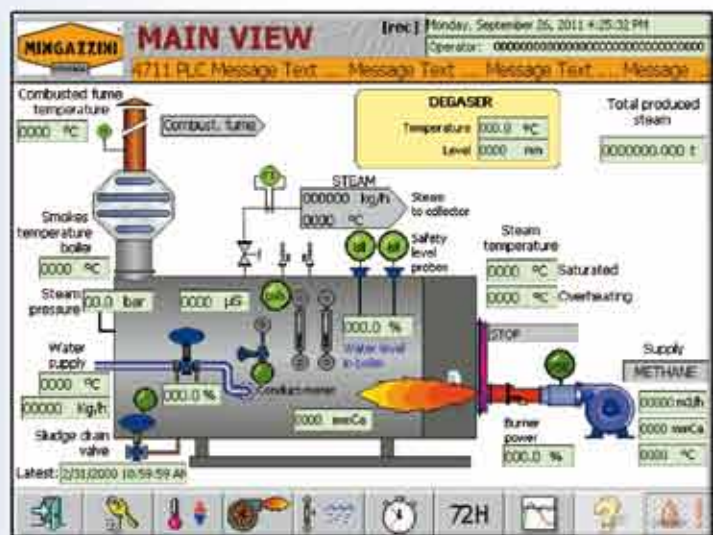


reaserch & developm



MINGAZZINI's products are the result of a systematic research activity in order to obtain the following results:

- innovative solutions to anticipate market requests;
- technological updating of fabrication plants and processes, monitoring the performance;
- high quality level of product/process.



ment

know-how and process technology



details making the di

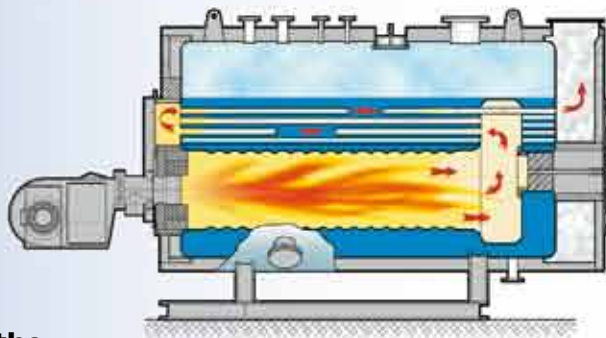
Hereby we can remember some relevant features in order to understand our technical and design choices:



Flanged tube plates (NOT flat tube plates), allowing butt welding to boiler main body, to avoid stress problems connected with flat tube plates with angle weldings.

Wet back

without any refractory to eliminate maintenance costs, the loss of heat through radiation and the overheating of rear tube plate.



The eccentricity of the furnace downwards,

the symmetric disposition of the tube nest and the absence of any obstacle enable the intense circulation of water in the steam boiler avoiding local overheating.

Three pass to enable the maximum exploitation of heat thus reaching high yield.

Big diameter firetube (FOX corrugated HOT FORMED IN ONE SINGLE PIECE, as a standard for outputs ≥ 10 t/h of steam or 7MW of superheated water, on request for other outputs) to enhance the efficiency and respect ecologically the emission values in the chimneys.



ifference



Expanded pipes with expansion grooving.



Complete accessibility and maintainability with doors on front smoke box, as well as on rear one for immediate complete accessibility to smoke tubes and tube plates (for cleaning, maintenance and inspection by Authorities in charge for periodic inspections and tests).



State of the Art technology of control and safety devices for easy and trouble-free boiler room management (including multichannel control device and PLC).



Assemblies designed, approved by Notified Body and manufactured, in accordance with the 2014/68/EU Directive, for operation without supervision for 24 and 72 hours.

By the installation of a **comburent air preheater** or an **economizer and systems for energy recovery** thermal efficiency can be increased up to 98,5%.



value for the customer

MINGAZZINI S.R.L. has always paid the greatest attention to Customer service, both as regards pre-sales technical consultancy, and post-sales.

Through its commercial office and its vast network of agents, MINGAZZINI S.R.L. is able to offer



technical support in the negotiation phase, and to propose the most suitable and advantageous technical-economic solutions in order to create genuine value for the Customer.

After the sale and startup the company offers an efficient service of support during the employment of the plant.

These services go hand in hand with an organisation to supply original spare parts.

According to MINGAZZINI SRL attitude,

“value for the Customer” means not only maximum quality of the supplied equipment, but also a high level of “before and after sale service”, thus creating a proactive and one-to-one cooperation relationship with the Customer.





TURNKEY BOILER ROOMS.

- Efficiency upto 98,5%.
- NOx emissions $\leq 70-150 \text{ mg/Nm}^3$

Boiler room with
total steam output: 24.000 kg/h.



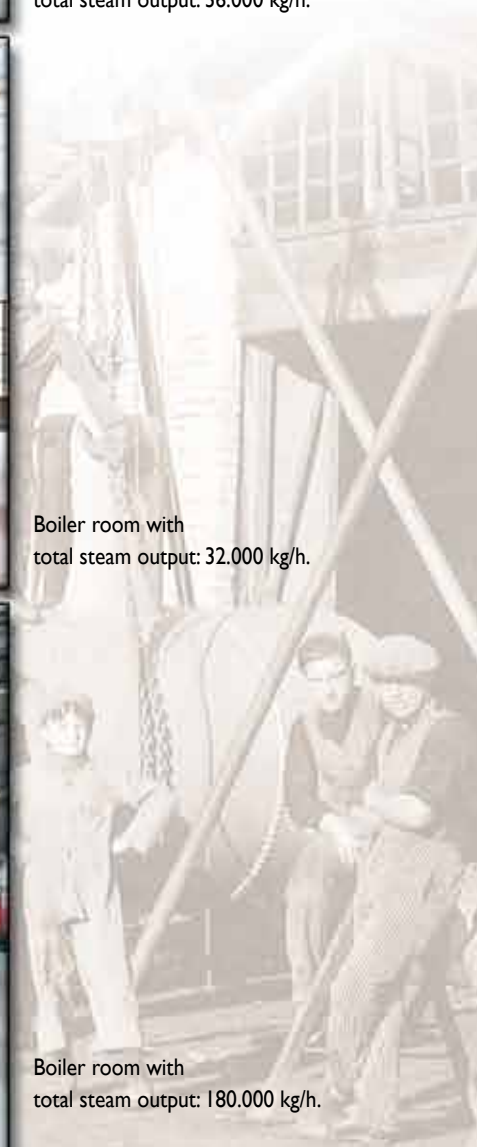
Boiler room with
total steam output: 36.000 kg/h.



Boiler room with
total steam output: 32.000 kg/h.



Boiler room with
total steam output: 180.000 kg/h.



our products



Steam boilers **PVR_EU SERIES**

Steam output from 350 to 5.000 kg/h, rated pressure upto 18 bar (higher rated pressure on request), back flame design, wet back. They can be equipped with combustent air preheater or economizer.



Steam boiler model **PB 200 EU SERIES** with FOX corrugated firetube and complete with combustent air preheater.



Steam boilers **PB_EU SERIES**

Steam output from 2.000 to 30.000 kg/h, rated pressure upto 24 bar (higher rated pressure on request), three pass (1 in the firetube, 2 in pipe nest) passing flame, wet back design. For steam output ≥ 10.000 kg/h, Fox corrugated firetube as a standard, on request for higher outputs. They can be equipped with combustent air preheater or economizer. They can be equipped with steam superheater.



Steam boilers **PB_EU SERIES** complete with FOX corrugated firetube.

Steam boilers **PB_EU SERIES** complete with economizer.





Superheated water boilers **PB_HS SERIES**

Capacities from 1.400 kW to 17 MW, rated pressure upto 18 bar (higher rated pressures on request), three pass (1 in the firetube, 2 in the pipe nest), passing flame, wet back design.

For capacities ≥ 7 MW, Fox corrugated firetube as a standard, on request for higher capacities. They can be equipped with comburent air preheater or economizer.

Hot water boilers **PB_HC SERIES**

Capacities from 3.500 kW to 17 MW, three pass (1 in the firetube, 2 in the pipe nest), passing flame, wet back design. For capacities ≥ 7 MW, Fox corrugated firetube as a standard, on request for higher capacities. They can be equipped with comburent air preheater or economizer.



Atmospheric and pressurised deaerators Capacity upto 60 m³.

Waste Heat Recovery Boilers (WHRB) for steam and superheated water production PAS SERIES

For heat recovery downward cogeneration or industrial processes plants, horizontal design, 1 or 2 pass.



“Our history and know-how to answer
to every new and challenging need of
the Customer”



MINGAZZINI s.r.l.