

Pulper Drive .



- MTR Martco does anywhere from 30 – 50 drives per year.
- Our exchange program has drives in stock for sizes #2, #3 and #4 and any ratio.
- We use all new internals; including gears and bearings. We keep all these parts in stock as well.
- We can rebuild drives manufactured by other OEM's.
- Our drives come with a 1 yr. warranty from time of install.



Pulper Drive Rebuilds

Exchange program maintained for BC pulper drives.



New gears, shafts, bearings, top Inpro seal; ran on test stand; 1 year warranty

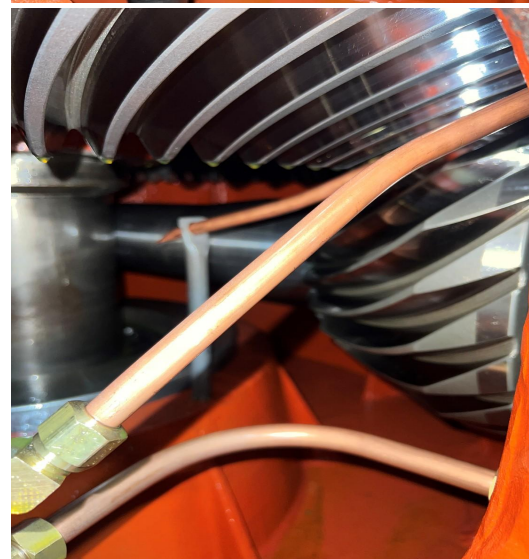
Stocked drives include No. 2, No. 3 (4.0 & 4.37 ratios) and No. 4 (4.37 & 4.83 ratios.)

Oil Lube Systems

- Pressurized oil flow
- 2 HP pump motor
- Filter with by-pass
- Flow, Pressure and Temp. safety switches



Rebuilt Drives



60" MTR Drum Screen





MTR Drum
Screen
Installed at
Inland Empire -
Spokane, WA

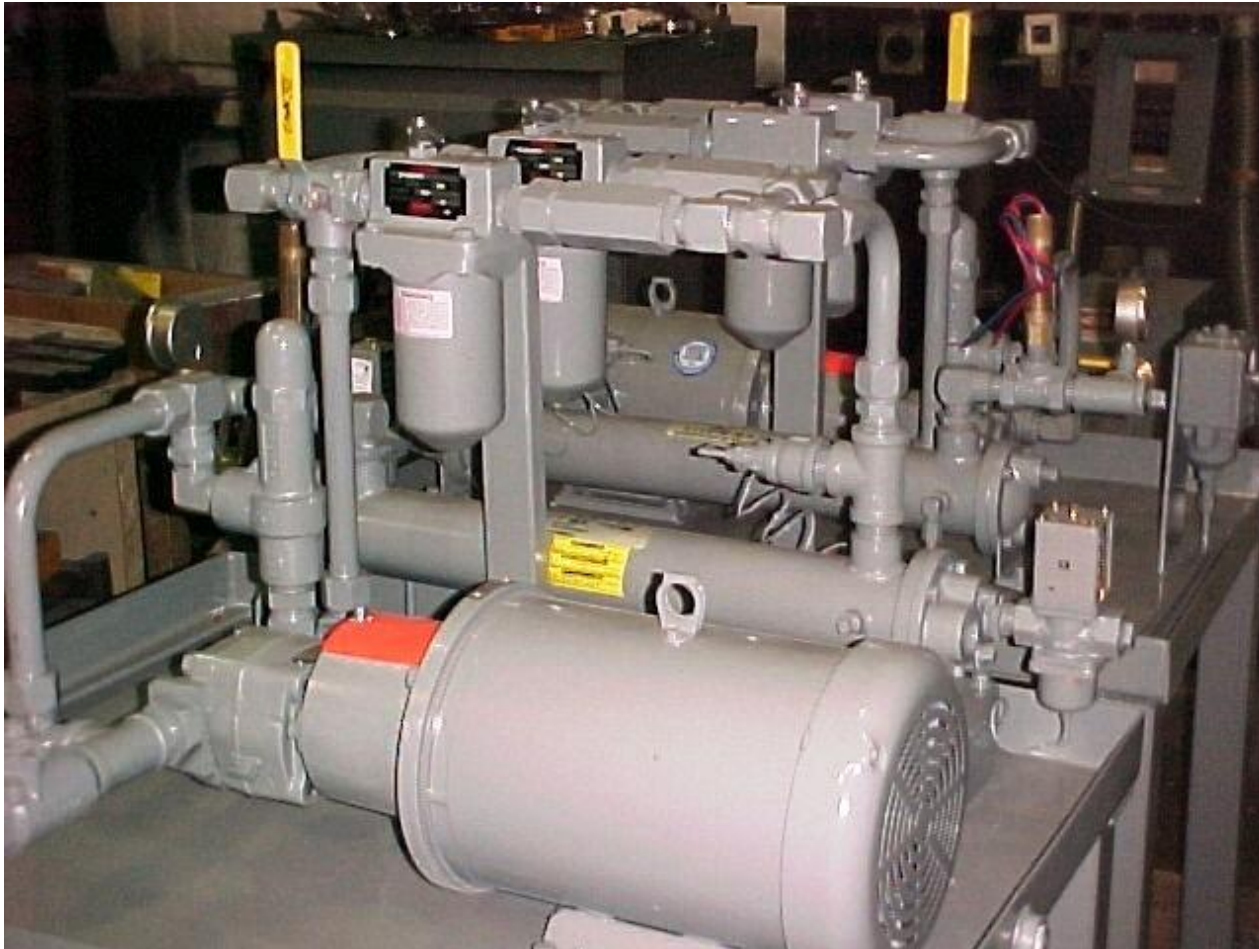
24" Continuous Detrasher



33" MTR Continuous Detrasher



Pulper Drive Lube System



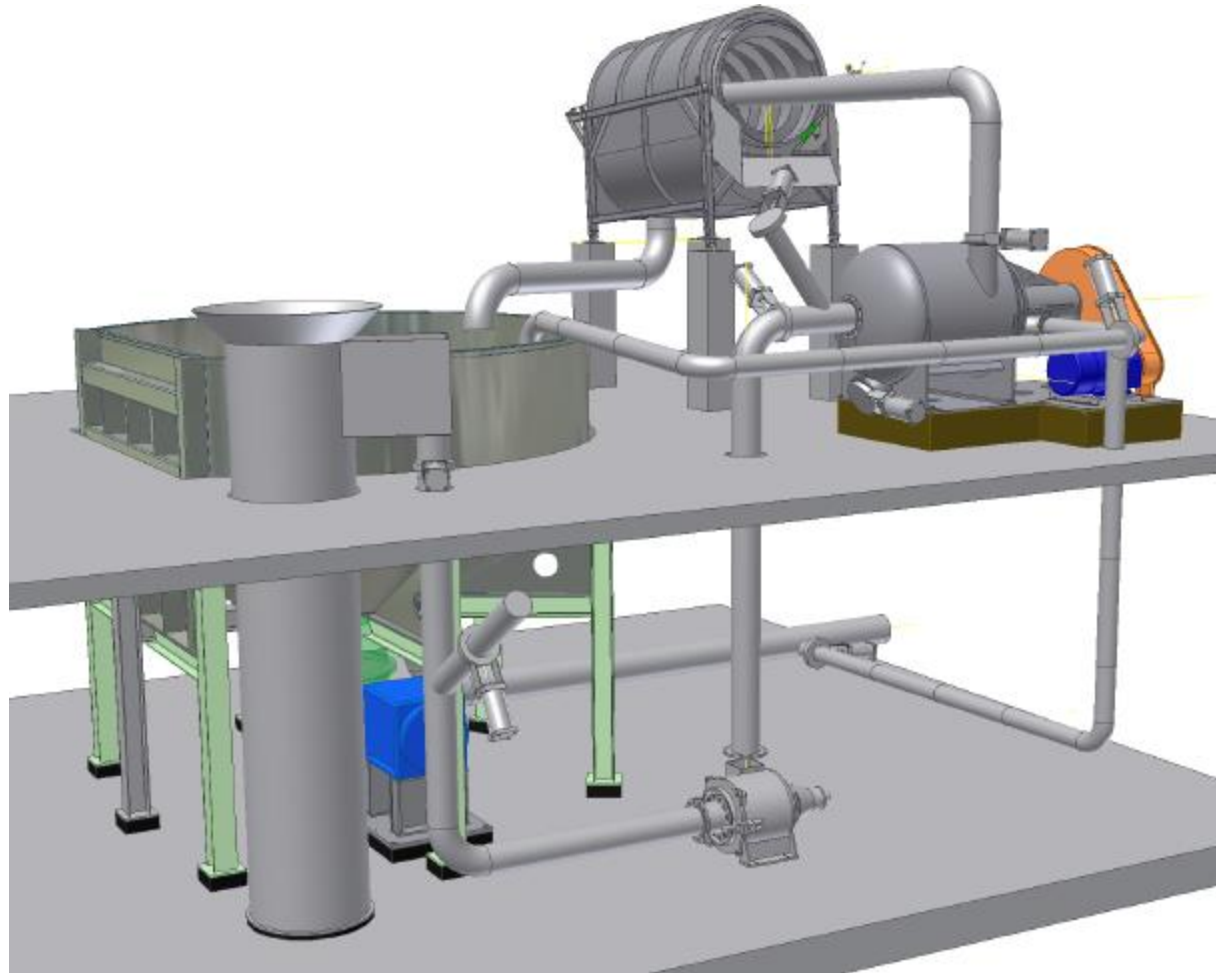
Rebuilt Refiner



Hydraulic Grapple and Hoist System for Trash Well



MTR Detrashing System – “Pump To”



Horizontal Digester Tubes with Time Control Screws



18' diameter MTR Pulper



Rebuilt Pulper Drives



MTR Hydraulic Deflaker





Ragger

30" opening

Pneumatic loading

Reversible loading drum

New and rebuilt RAGGER.





Ragger and Rope Cutter

MTR 30" Ragger

- Carbon Steel
- 5 HP/1800 RPM motor
- Air operated

MTR 30" Rag Rope Cutter

- Carbon Steel
- 15 HP/1800 RPM motor
- 3000 PSI Hydraulic system



Roll Splitters



- Hardened tool Steel cutting knife
- Roll sizes up to 72" diameter
- 144" face length